



Children and Families Overview and Scrutiny Committee

Date:	Tuesday, 20 June 2017
Time:	6.00 pm
Venue:	Committee Room 1 - Wallasey Town Hall

Contact Officer: Patrick Sebastian
Tel: 0151 691 8424
e-mail: patricksebastian@wirral.gov.uk
Website: www.wirral.gov.uk

AGENDA

1. APOLOGIES FOR ABSENCE

2. DECLARATIONS OF INTEREST

Members are asked to consider whether they have any disclosable pecuniary interests and/or any other relevant interest in connection with any item(s) on this agenda and, if so, to declare them and state the nature of the interest.

Members are reminded that they should also declare whether they are subject to a party whip in connection with any item(s) to be considered and, if so, to declare it and state the nature of the whipping arrangement.

3. BRIEFING PACK - CHILDREN & FAMILIES OSC (Pages 1 - 12)

The Overview and Scrutiny Committee Briefing pack provides Members with an introduction to the purpose of scrutiny and includes details of the Committee remit and operational information.

Members are requested to note the contents of the Briefing Pack.

4. COMMITTEE REMIT AND KEY ISSUES FOR THE MUNICIPAL YEAR

Presentation.

5. IMPROVEMENT PLAN - UPDATE

Presentation.

6. SCRUTINY SAFEGUARDING REVIEW – DECEMBER 2015: UPDATE OF PROGRESS (Pages 13 - 34)

7. SCHOOLS STRATEGY

Presentation.

8. 2016/17 QUARTER 4 AND YEAR END WIRRAL PLAN PERFORMANCE - PEOPLE THEME (Pages 35 - 78)

9. FINANCIAL MONITORING - 2016/17 Q4

Report to follow.

10. CHILDREN & FAMILIES OSC - WORK PROGRAMME UPDATE REPORT (Pages 79 - 92)

11. ANY OTHER URGENT BUSINESS APPROVED BY THE CHAIR (PART 1)

12. EXEMPT INFORMATION - EXCLUSION OF MEMBERS OF THE PUBLIC

The public may be excluded from the meeting during consideration of the following items of business on the grounds that they involve the likely disclosure of exempt information.

RECOMMENDATION – That in accordance with section 100A (4) of the Local Government Act 1972, the public be excluded from the meeting during consideration of the following items of business, on the grounds that they involve the likely disclosure of exempt information as defined by the relevant paragraphs of Part 1 of Schedule 12A (as amended) to that Act. The public interest test has been applied and favours exclusion.

13. ANY OTHER URGENT BUSINESS APPROVED BY THE CHAIR (PART 2)

Children and Families Overview & Scrutiny Committee

Members' Briefing Pack

June 2017

Contents:

1. The Purpose of Scrutiny
2. The Scope of the Children and Families Overview and Scrutiny Committee
3. Committee Membership and Meeting Schedule
4. The Work Programme
5. Relevant Wirral Plan Pledges, Strategies and Plans
6. Officer Support Arrangements
7. Key Contacts

1. The Purpose of Scrutiny

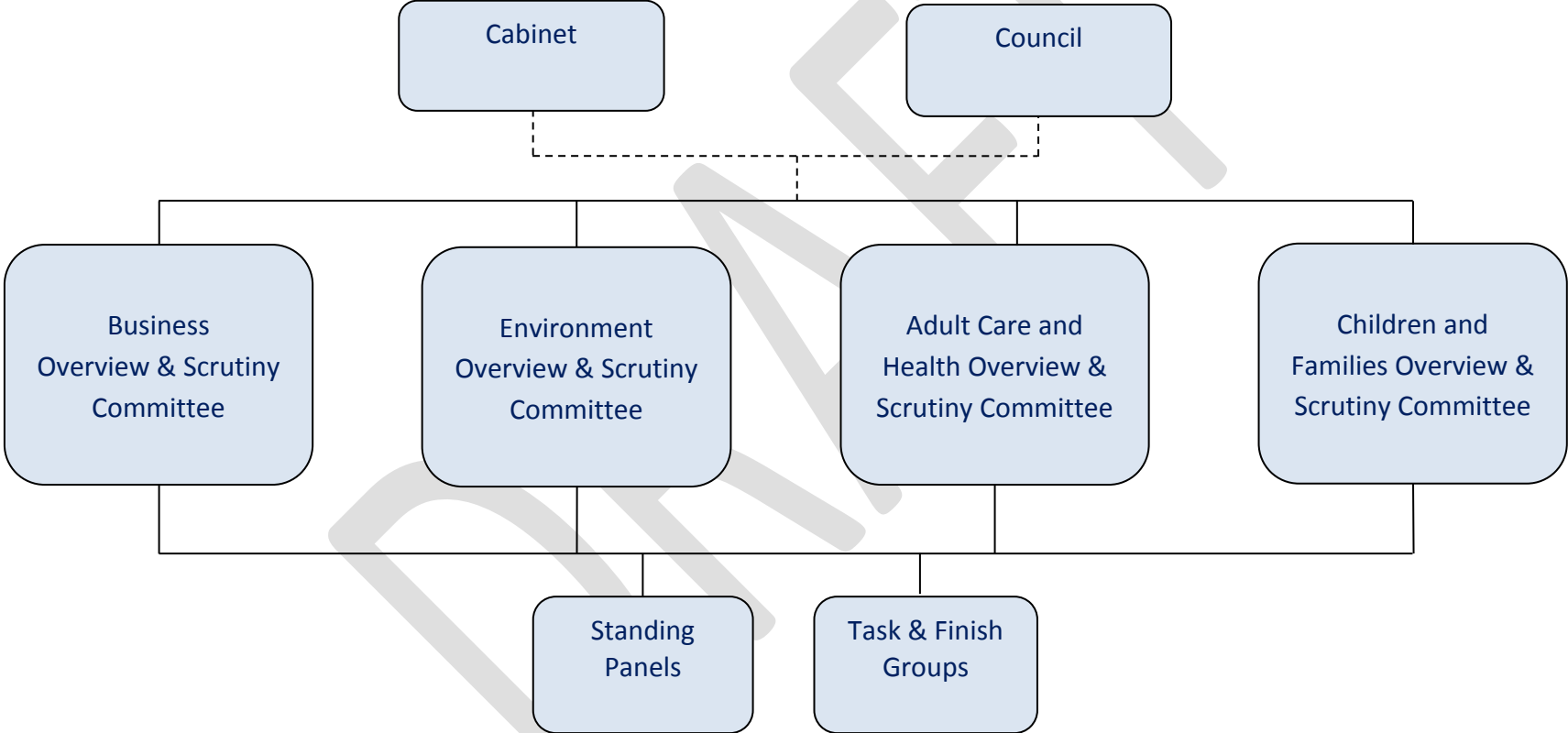
Overview & Scrutiny was introduced by the Local Government Act 2000. It places a statutory requirement on Councils that operate Executive arrangements to have an Overview and Scrutiny function in place. This is discharged through the creation of dedicated committees composed of Councillors who are not members of the Cabinet. Wirral Council's Overview & Scrutiny function is delivered through three Overview & Scrutiny Committees.

Overview and Scrutiny is a vital component of good governance. It provides a mechanism to engage non-executive Members in reviewing the effectiveness of Council policy and service delivery as well as that of local partners and other providers. It has the potential to drive improvement and significantly enhance the quality of Council decision-making, service provision and cost-effectiveness.

Overview and Scrutiny fulfils a number of roles including:

- **Holding the Executive to account** – a primary role is to provide a framework of accountability to modify executive behaviour and prevent the abuse of power. This includes the power to call-in Executive decisions (see page 6).
- **Holding Partners to account** – scrutiny provides an opportunity to investigate the work of public, private and voluntary sector partners and their impact on the community.
- **Horizon-scanning** – looks ahead to future changes in local government in order to help the Council prepare. This will usually mean considering future activity by central government which will have repercussions at a local level.
- **Policy Development and Review** – scrutiny contributes to the development of key policies to be included in the Council's policy framework, as well as examining how well a policy has been delivered and if outcomes have been achieved.
- **Pre-decision scrutiny** – examines the council's proposals and draft programmes to inform their development before they are implemented. This helps improve the quality of proposals and avoids mistakes being made.
- **Post-decision scrutiny** – examines the implementation of council policy and performance and enables the council to review the effects of its decision-making.
- **Performance management and improvement** – involves reviewing achievement against Wirral Plan objectives and targets. This can be a powerful force for improvement by highlighting areas of poor performance and ways to address them.

The Overview & Scrutiny Committee structure at Wirral Council is set out in the diagram below:



2. The Scope of the Children and Families Overview and Scrutiny Committee

The scope and remit of the Children and Families Overview and Scrutiny Committee is set out in the table below:

Wirral Plan Pledges	<ul style="list-style-type: none"> • Children are ready for school • Young people are ready for work and adulthood • Vulnerable children reach their full potential • Reduce child and family poverty • Zero tolerance to domestic violence
Scope of the Committee	<p>To review and / or scrutinise any strategies and plans, and the delivery of these plans, including:</p> <ul style="list-style-type: none"> • Wirral’s Strategy for Children, Young People and Families • Improving Life Chances Strategy • Zero Tolerance to Domestic Abuse Strategy • Safeguarding Strategy • Schools Strategy <p>To review and / or scrutinise the commissioning, management and performance of services for:</p> <ul style="list-style-type: none"> • Children’s Care • Children’s Services • Education • Children’s Safeguarding
Cross-Cutting Themes	<ul style="list-style-type: none"> • People with disabilities live independently (link with Adult Care and Health) • Liverpool City Region Combined Authority

Notices of Motion

Under the council procedure rules, Members of the Council can ask for any matter that affects the Wirral area, or which the council has responsibility for, to be discussed at a council meeting. The procedure is called a "notice of motion". The Mayor or a majority vote at Council can determine that a particular Notice of Motion can be referred either to the Leader or to a Council Committee. Therefore, some Notices of Motion are referred to the most appropriate Overview & Scrutiny Committee for further debate.

A Member of the Council who has moved a motion which has been referred to an Overview & Scrutiny Committee will be given notice of the meeting at which it is to be considered. The Member will be invited to attend the meeting and be given the opportunity to explain the motion. The Committee will be able to endorse, reject or amend the proposal. The decision of the Committee will be reported to a subsequent Council meeting, where the report or recommendation of the Committee will be debated.

Call-in

Non-executive councillors have the power to 'call-in' an executive decision taken by the Cabinet, an individual portfolio holder or a key decision taken by an officer. Once a decision has been made and formally publicised, Councillors have five working days to call-in the decision. A minimum of six councillors must request that the decision be called-in. This results in the implementation of the decision being delayed in order to allow the decision to be scrutinised.

If a valid call-in has been received a meeting of the relevant Overview & Scrutiny Committee is normally convened within 15 working days. The call-in will be dealt with by the Overview & Scrutiny Committee whose remit most closely aligns with the subject of the decision. The call-in meeting gives scrutiny members an opportunity to test the merits of the decision. The Overview and Scrutiny Committee cannot change the decision but will either uphold the decision or refer the matter back to the decision-maker for reconsideration. When it refers a decision back, the Committee may ask the decision maker to consider particular points or alternative courses of action. The Cabinet (or portfolio holder) is not bound to accept any advice offered to it and will have sole discretion on any further action to be taken.

3. Committee Membership and Meeting Schedule

Committee Membership

15 Members		
9 Labour	5 Conservative	1 Liberal Democrat
Tom Usher (Chair) Moira McLaughlin (Vice-Chair) Tony Jones Brian Kenny Chris Meaden Walter Smith Jean Stapleton Warren Ward Gillian Wood	Paul Hayes (Spokesperson) Tom Anderson Wendy Clements Cherry Povall Adam Sykes	Alan Brighthouse (Spokesperson)
Co-opted members		
2 Diocesan reps (with voting rights): Roman Catholic – Mr Damian Cunningham Church of England – Vacancy		
2 Parent Governor reps (with voting rights): Mr Mark Harrison (until 28 October 2019) Vacancy		

Meetings Schedule

Formal Committee meetings are scheduled for the following dates during the 2017/18 municipal year:

- 20th June 2017
- 26th September 2017
- 14th November 2017
- 25th January 2018
- 14th March 2018

Meetings normally commence at 6.00pm

4. The Work Programme

Good scrutiny relies on members taking the lead, gathering evidence and reporting back their findings. Each Overview & Scrutiny Committee develops a work programme for the municipal year. The work programme should align with corporate priorities and will be informed by:

- The Wirral Plan pledges
- The Council's transformation programme
- The Council's forward plan
- Service performance information
- Risk management information
- Public or service user feedback
- Referrals from Cabinet

Good practice suggests that, in order to maximise the impact of scrutiny, it is necessary to prioritise proposed topics within the work programme. The following criteria will provide a guideline towards ensuring that the most significant topics are prioritised:

Principles for Prioritisation	
Wirral Plan	Does the topic have a direct link with one of the 2020 pledges?
	Will the review lead to improved outcomes for Wirral residents?
Public Interest	Does the topic have particular importance for Wirral Residents?
Transformation	Will the review support the transformation of the Council?
Financial Significance	Is the subject matter an area of significant spend or potential saving?
	Will the review support the Council in achieving its savings targets?
Timeliness / Effectiveness	Is this the most appropriate time for this topic to be scrutinised?
	Will the review be a good use of Council resources?

By assessing prospective topics using these criteria, the Committees can prioritise an effective work programme that ensures relevance and the highest potential to enhance outcomes for residents.

The work programme is presented as a schedule highlighting the topics to be considered. The selection of topics is considered at the start of the municipal year and reviewed at each

committee meeting. The Chair will usually discuss potential topics with the party spokespersons, relevant Portfolio Holder and Strategic Director.

There are a number of mechanisms to carry out scrutiny, depending on the level of detail required as follows:

- Scrutiny reviews undertaken by task & finish groups
- Standing panels
- Evidence day(s)
- Workshops
- Committee reports provided by officers
- Standing committee agenda items, for example, performance monitoring and financial monitoring.

As some of the topics may cut across the Wirral Plan themes, it is anticipated that some of the scrutiny topics may be of interest to members of more than one committee. In these circumstances, opportunities for members of more than one committee to work jointly on an item of scrutiny work will be explored.

5. Relevant Plans, Reports and Strategies

Wirral Plan Strategies

- The Wirral Plan
- Wirral's Strategy for children, young people and families
- Improving life chances
- Schools Strategy (in development)
- Zero tolerance to domestic abuse

All strategies can be found on the Wirral Council website:

[Wirral Plan: a 2020 vision | www.wirral.gov.uk](http://www.wirral.gov.uk)

Wirral Plan Performance Reporting

Each Committee receives quarterly performance reports detailing performance against the pledges that fall within the remit of the Committee. This enables Members of Overview and Scrutiny Committees to scrutinise the performance of Wirral Council and its partners in relation to delivering the Wirral Plan.

All Wirral Plan performance reports are published on the performance page of the Council's website:

[Wirral Plan performance | www.wirral.gov.uk](http://www.wirral.gov.uk)

Financial Information

[Medium Term Financial Strategy](#)

Wirral Safeguarding Children Board

[WSCB Annual Report 2015-16](#)

6. Officer Support Arrangements

The Chair and Committee will be supported by the Scrutiny Support Team as follows:

- Working with the Chairs of the Overview & Scrutiny Committee and Review Panels in preparing agendas, work programming and dealing with matters arising at meetings.
- Support in the scoping, planning and management of scrutiny reviews, including notes of working group meetings and coordination of witnesses.
- Ensuring Chairs and Members are kept informed of relevant scrutiny guidance, and that Chairs have the information needed to feel confident in chairing their committees.
- Undertake background research for the committees and for specific scrutiny reviews.
- Working with Review Panel Members to draft reports and recommendations arising from scrutiny reviews.
- Monitoring the progress of previous recommendations from committee meetings or scrutiny reviews.
- Liaising with senior managers and teams across the Council to ensure appropriate officer support is available for committee meetings and scrutiny reviews.
- Facilitating appropriate events for Members and officers involved in scrutiny work.

Officers have developed scrutiny guidance and a toolkit for Members which can be accessed at the following link:

<http://wbcnet.admin.ad.wirral.gov.uk/governance-scrutiny/scrutiny-toolkit>

7. Key Contacts

Director of Children's Services

Deborah Gornik

deborahgornik@wirral.gov.uk

Scrutiny Support

Alan Veitch – Scrutiny Officer

alanveitch@wirral.gov.uk

Committee Services

Patrick Sebastian – Principal Committee Services Officer

patricksebastian@wirral.gov.uk

DRAFT

This page is intentionally left blank



Children and Families Overview and Scrutiny Committee Tuesday, 20 June 2017

REPORT TITLE:	Scrutiny Safeguarding Review – December 2015: Update of progress
REPORT OF:	Director for Children's Services

REPORT SUMMARY

The purpose of this report is to provide an update on the progress made implementing 20 key recommendations from the Safeguarding Scrutiny Review that the Families and Well-Being Scrutiny Committee undertook in December 2015.

It also provides an opportunity to cross reference and ensure that this work is incorporated into the Ofsted Safeguarding Improvement Plan as a result of the inspection in July 2016 and ensure there is no duplication or omissions with regards to priorities and reporting.

The findings of this report is critical to the delivery of the Children and Young People 20/20 pledges which are Children are ready for school and Vulnerable children reach their full potential

This matter affects all Wards within the Borough.

The required decision is not a key decision.

RECOMMENDATION/S

Members are recommended to:

- 1) endorse the progress made against the 20 Safeguarding Scrutiny Review recommendations
- 2) agree that any areas of focus are cross referenced and captured in the Ofsted Improvement Plan.

SUPPORTING INFORMATION

1.0 REASON/S FOR RECOMMENDATION/S

- 1.1** Members are requested to support the recommendations as this will help ensure there is a cohesive, joined up, action led approach to delivering the required improvements within the Children and Young People Department and Safeguarding is everyone's priority.

2.0 OTHER OPTIONS CONSIDERED

- 2.1** This scrutiny review provides a significant evidence base to give assurance that children and young people in Wirral are safe, those most vulnerable are protected and that outcomes are improving.

3.0 BACKGROUND INFORMATION

- 3.1** Since the Ofsted inspection of local authority services for children in need of help and protection, children looked after and care leavers and review of the Local Safeguarding Children Board in July 2016, there has been a significant investment and activity with regards to the Safeguarding Improvement Journey. This has included the establishment of an Improvement Board (including an independent chair), the production of a high level Improvement Plan, a renewed Local Safeguarding Children's Board and a DfE Review of progress to date.

- 3.2** In December 2015 a comprehensive report was produced by the Families and Well-Being Scrutiny Committee which made a number of references with regards to the safeguarding of children and young people in Wirral. The review concluded with twenty recommendations, grouped under five headings:

- 1. Organisational structure**
- 2. Procedures and Processes**
- 3. Partnership working**
- 4. Staffing issues**
- 5. Governance arrangements**

In July 2016, an update was provided to the People Overview and Scrutiny Committee on the implementation of such recommendations. This report provides a further update on the delivery of recommendations, if they have been completed and if not how they are factored into the overall response to the Ofsted Safeguarding Improvement Plan

The following table captures the recommendations and provides the required update for elected members:

Original Scrutiny Recommendation (Dec 15)	Previous Update from Jun 16	June 2017 - Update
<p>1 – Development of the Multi Agency Safeguarding Hub (MASH)</p> <p><i>The Director of Children Services (DCS) is requested to continue to develop the MASH concept and explore opportunities to include additional partner organisations in the model.</i></p>	<p>The MASH concept has continued to be developed and opportunities explored to include additional partner organisations in the model by:</p> <ol style="list-style-type: none"> Partners co-located in the MASH include Children’s Social Care, Early Help & Prevention, Adults Social Care, Police, Health, Family Safety Unit and Catch 22. MASH provides a consistent approach to triaging all new requests for help from children, families and professionals. The MASH Board and the MASH Operational Group includes additional partners such as Probation (Community Rehabilitation Company) and housing representatives. 8 workshops were held across the Children’s partnership during March and April 2016 to clarify the role of the MASH and to confirm thresholds for accessing services. Approximately 500 people attended. The role and function of the MASH is under constant review to ensure it is working as effectively as possible. 	<ul style="list-style-type: none"> The Integrated Front Door model builds on the MASH concept and has been signed off at WSCB and the strategic MASH board. The strategic MASH board monitors and challenges developments through a delivery action plan. The delivery action plan is closely monitored through the MASH operational group that reports to the MASH board. In December 2016 a multi-agency reference group was established to consider and review the threshold model, this work looked at pathways for access to services In December 2016 training on section 17 and section 47 was delivered to Elected members In January/February 2017 the reviewed threshold and reconfiguration pathways and processes was presented to over 460 staff and partners through 4 conferences. In February 2017 a seminar was delivered for partners to consider safeguarding priorities from an early help and prevention context In April 2017 safeguarding and early help and prevention training was delivered to elected members Liquid Logic has been redesigned to successfully support the new pathways in the Early Help (EH) module of Liquid Logic A permanent position has been developed and sees an Education professional positioned at the integrated front door, realigned access through a portal point at the integrated front door. Planned strategic alignment with Safer Wirral Hub co-located at Solar Campus.
<p>2 – The front door to social care</p> <p><i>The DCS is requested to consider alternative operating</i></p>	<p>Alternative operating models for the front door to Specialist (Children’s Social Care) and Targeted Services (Early Help and Prevention), including those offering further integration have been considered through:</p> <ul style="list-style-type: none"> Staff from the Early Help & Prevention 	<ul style="list-style-type: none"> Systems and processes ensure reporting to the integrated front door by professionals and members of the public concerned about a child are effective and efficient

Original Scrutiny Recommendation (Dec 15)	Previous Update from Jun 16	June 2017 - Update
<p><i>models for the front door to Specialist and Targeted Services including those offering further integration, such as a combined Gateway and CADT (Central Advice and Duty Team).</i></p>	<p>(Gateway) and Children’s Social Care (CADT) co-located within the MASH.</p> <ul style="list-style-type: none"> • A review of the operation of the ‘Gateway’ and CADT was completed to develop a revised model of a single front door for Children’s Services. A meeting of the MASH Board on the 2nd March confirmed the proposed arrangements, which were implemented on the 9th May 2016. • The DCS commissioned a MASH Diagnostic which undertook a detailed review of the performance of the MASH. The specification for this work was presented and approved at the MASH board on 3rd March 2016 and was completed on the 13th April 2016. This provided an assessment of current performance and areas for development. • A multi-agency development day is planned for September 2016. This will build on and develop the current model of early help, working with schools, early years settings and partners to effectively and safely contribute to managing the demand for children’s social care services by intervening earlier when issues arise. The role of the MASH will be embedded in this cross-partnership work, and it is likely to lead to further development of the model. 	
<p>3 - Monitoring performance data</p>	<p>An effective mechanism to monitor the progress of children across different service provision is being established through:</p> <ul style="list-style-type: none"> • A new “dashboard” of information was put 	<ul style="list-style-type: none"> • This recommendation is a clear priority to the Improvement Board and will be reported via the refreshed Performance Management Framework. • An effective performance data reporting function has been

Original Scrutiny Recommendation (Dec 15)	Previous Update from Jun 16	June 2017 - Update
<p><i>The DCS is requested to establish an effective mechanism to monitor the progress of children across different service provision and to provide regular performance data to monitor outcomes for young people and families who receive specialist or targeted services.</i></p>	<p>in place in September 2015 which provides contemporary data on contacts, referrals, assessments and social worker caseloads.</p> <ul style="list-style-type: none"> • An effective performance data reporting function will be developed to provide accurate, timely reports. 	<p>developed to provide accurate, timely reports.</p> <ul style="list-style-type: none"> • Scrutiny will receive regular performance reports at agreed intervals.
<p>4 – Contact with Individual family members</p> <p><i>The DCS is requested to ensure that opportunities are provided for individual family members, including the child, to provide information before and after a child protection conference.</i></p>	<p>To ensure that opportunities are provided for individual family members, including the child to provide information before and after a child protection conference the following steps are being taken:</p> <ul style="list-style-type: none"> • In response to what families have told us, case conferences are now held at a single venue that has been developed with good facilities to support families in being able to fully participate in the meeting. The Independent Reviewing Officers always meet with the family and the young person, if attending, to explain their role and what is going to happen in the conference, and there is a suitable private space available for them to do this. • A Young Person’s Engagement Officer has been recruited to develop creative ways to secure the views of children and young people. • The Wirral Safeguarding Children Board (WSCB) has resolved to introduce a new model of child protection later this year, based on the Strengthening Families and Signs of Safety models. 	<ul style="list-style-type: none"> • The voice of the child is a key focus of all assessments. This is monitored through management oversight at case level and through the audit process. • The role of the Independent Review Officer is clearly sighted on ensuring children and young people have the opportunity to talk about what is important to them and to ensure follow up • ‘Strengthening Families Enhancing Futures’ (SFEF) is the approved delivery model for the children’s workforce. • There will be two launch days 22 and 28 June for all partners and Social Care Staff to launch the model. • The Principles of the model have been launched with a ‘Prompt Sheet’ to partners in April 2017 and training is planned throughout the Summer, with the planned implementation of the new Conference Model in October 2017 • The SFEF model will be then launched across the whole of the service to be used from Early Help to Child Protection from January 2018.

Original Scrutiny Recommendation (Dec 15)	Previous Update from Jun 16	June 2017 - Update
	<ul style="list-style-type: none"> Child Protection Standards have been developed and implemented this year, in line with Working Together to Safeguard Children 2015. 	

Original Scrutiny Recommendation (Dec 15)	Previous Update from Jun 16	June 2017 - Update
<p>5 – Formal notification to family members</p> <p><i>The DCS is requested to ensure that the outcome of a child protection conference is reported to family members in a written format.</i></p>	<ul style="list-style-type: none"> Families and professionals are now sent the outline child protection plan within 24 hours of the meeting. This plan sets out a family's strengths, areas for development and clear expectations in relation to ensuring the safety of children. The requirement to do this is included in the child protection standards. The model being developed for child protection will consider how individual family members are given the opportunity to discuss the outcome of conferences with a neutral contact. Parents who have had experience of child protection conferences and plans will inform this work, as they are part of the group developing the model. 	<ul style="list-style-type: none"> The Children and Young People's Safeguarding Unit have taken responsibility to ensure that minutes are sent to the family.
<p>6 – Feedback from service users</p> <p><i>The DCS is requested to investigate the possibility of providing a mechanism for individuals to feedback experiences of the child protection conference process on a confidential basis.</i></p>	<p>The provision of a mechanism for individuals to feedback experiences of the child protection conference process on a confidential basis is being progressed by:</p> <ul style="list-style-type: none"> Families now being able to access improved information through the Wirral Children's Safeguarding Board Website, launched in April 2016. This enables families to access information and advice about local Child Protection arrangements and will also provide opportunities for feedback on the individual experiences of children, young people and their families The experiences of parents and young people informing development of the Wirral Signs of Safety and Strengthening Families based model for child protection services. The conference chair does invite feedback 	<ul style="list-style-type: none"> Families are now given feedback forms at the end of Child Protection conference. Parents and children are supported to complete the feedback forms. This information is collated monthly and fed back to the Director.

Original Scrutiny Recommendation (Dec 15)	Previous Update from Jun 16	June 2017 - Update
	<p>from the parents about their experience but a variety of ways to allow families to feedback their experiences are being built into the model.</p>	

Original Scrutiny Recommendation (Dec 15)	Previous Update from Jun 16	June 2017 - Update
<p>7 – ‘Closing the loop’</p> <p><i>The DCS is requested to consider the options for ensuring that the originator of a safeguarding concern is informed of the outcome.</i></p>	<ul style="list-style-type: none"> It is the role of the MASH manager to ensure feedback is provided to each person making a safeguarding referral. This is a requirement of national safeguarding standards and was reinforced by Working Together to Safeguard Children 2015. This requirement was tested through the MASH diagnostic. A management instruction is in place to ensure feedback in every case takes place and practice will be audited on a continuous basis. 	<ul style="list-style-type: none"> Professional response forms are now embedded in the contact records in Liquid Logic as mandatory fields on all requests for service.
<p>8 – Definition of assessment threshold levels</p> <p><i>The DCS is requested to develop a training plan aimed at reinforcing the interpretation and application of the definition of the threshold levels for intervention.</i></p>	<p>Eight workshops were held during March and April 2016 to ensure partners clearly understood thresholds to access services. Over 485 professionals attended. To support a better understanding and to ensure thresholds were consistently applied:</p> <ul style="list-style-type: none"> The Integrated Working Guide was reissued in November 2015 A Training Officer for the Safeguarding Board was appointed in May and will oversee and report attendance of professionals at the relevant multi agency training relating to the Guide. <p>A review of the ‘Threshold of Need’ is currently underway and is included in the WSCB Business Plan for 2016.</p>	<ul style="list-style-type: none"> There has been a review of the threshold document and this has been delivered to partners via 4 conferences January 2017 and February 2017 which were well attended. The activity documented for recommendation 1 also supports recommendation 8
<p>9 – Special Guardianship Orders</p> <p><i>The DCS is requested to ensure that the processes in</i></p>	<p>The safety of children placed with Special Guardians has been given greater prominence in the recently published Special Guardianship (amendment) Regulations 2016. In response to these changes and to ensure children are safe we have:</p> <ul style="list-style-type: none"> Updated our procedure for Special 	<ul style="list-style-type: none"> Special Guardians are assessed in line with Guidance and Regulations. These are then considered by Area Decision Makers. Procedures with regards to assessments of Special Guardianship applications were updated in March 2016 in line with Special Guardianship (amendment) regulations 2016 which prescribes the matters to be dealt with by local

Original Scrutiny Recommendation (Dec 15)	Previous Update from Jun 16	June 2017 - Update
<p><i>place to find Special Guardians are as robust as those for Foster Carers and Adopters so that all children placed under Special Guardianship Orders remain safe and are supported within that placement.</i></p>	<p>Guardianship with associated practice guidance for Social Workers, which will be complete in September 2016. A report went to the Children's Sub Committee on 30th March 2016.</p> <ul style="list-style-type: none"> • Held focus Groups in May 2016 with Special Guardians to consider the breadth of support needs required so that children remain safe and are supported. A number of developments are being taken forward as a consequence of these focus groups. • Provided support through a dedicated Adoption and Special Guardianship Team. Whilst the majority of Special Guardians receive a level of financial support for the care of the child, we are working with them to look at what services and support they require to ensure they fully meet the needs of the children in their care. 	<p>authorities in reports they prepare for the court in applications for special guardianship orders.</p> <ul style="list-style-type: none"> • Support continues to be provided via the Adoption and Special Guardianship Team to Special Guardians. Each applicant has an assessment of their finances and support offered in line with the level of need. Financial support is reviewed yearly for Special Guardians receiving financial support.
<p>10 – Involving all partners in social work assessments</p> <p><i>The DCS is requested to ensure that all organisations involved with the child, including third sector organisations, are given the opportunity to provide information when social work assessments are being prepared.</i></p>	<ul style="list-style-type: none"> • All identified organisations working with children and families will be asked to contribute to the Social Work Assessment of Need being produced. Arrangements to support this include MASH, information sharing agreements and the new child protection model. A member of a third sector organisation has been co-opted on to the development group to ensure steps are taken for this recommendation is followed in order that partner agencies will be fully engaged in the assessment process 	<ul style="list-style-type: none"> • The integrated front door ensures a partnership response in assessments. • This is a key development and monitored through the improvement work
<p>11 – GPs and</p>	<p>GP's are required to share information on families subject to an initial child protection conference, in the form of a written report or</p>	<ul style="list-style-type: none"> • GPs are asked for reports and are consistently providing these for Conference.

Original Scrutiny Recommendation (Dec 15)	Previous Update from Jun 16	June 2017 - Update
<p>Safeguarding</p> <p><i>The DCS is requested to work in conjunction with Wirral Clinical Commissioning Group to develop a mechanism to encourage GPs to provide relevant information to safeguarding investigations and formal meetings.</i></p>	<p>attendance at the conference in person. To support GP's to understand the importance of this, the following has been put in place:</p> <ul style="list-style-type: none"> • A Safeguarding training programme for GPs is in place to enable them to have an understanding of the 'Thresholds of Need' and intervention. • The Designated Safeguarding Nurse will ensure that training continues to be provided to GP's. The training will ensure that GP's continue to improve their understanding of the 'Threshold of Need' and the evidence required to support a referral. 	
<p>12 – Relationship between schools and MASH</p> <p><i>The DCS is requested to consider the provision of a reference point for schools within the MASH.</i></p>	<ul style="list-style-type: none"> • There is currently no single dedicated person in this role within the MASH. Consideration will be given to how the engagement of schools in safeguarding children is made easier. • MASH briefings have been held this year with Schools presenting case studies to help their understanding of thresholds and encourage early consultation with Children's Services staff. • A schedule of Safeguarding training is provided across the partnership, supported by the WSCB. Training includes Common Assessment Framework (CAF) & Team Around the Family (TAF) training courses and the Working Together Training Course to order to ensure professionals have the skills to identify levels of risk and take appropriate action. These courses are highly valued and well attended by professionals. 	<ul style="list-style-type: none"> • A permanent position has been developed and sees an Education professional positioned at the integrated front door, realigned access through a portal point at the integrated front door. • School consultants for Primary and Secondary sit as members of the MASH strategic board • School consultants sit as members of the operational group. • Presentation made to the school Governors Forum regarding the integrated front door

Original Scrutiny Recommendation (Dec 15)	Previous Update from Jun 16	June 2017 - Update
<p>13 – Relationship between social care and schools</p> <p><i>The DCS is requested to consider ways in which stronger relationships can be developed between social workers and schools, in order to encourage all schools to become more integrated in the safeguarding process.</i></p>	<p>Stronger relationships are being developed between social workers and schools by:</p> <ul style="list-style-type: none"> • Having smaller social work teams since June 2015, to work with children in need of protection. It is recognised that relationships between Social Workers and schools needs to be strengthened. There are dedicated children looked after teams in each locality. This is intended to strengthen work with all partners in each locality including schools. Social Workers involved in Early Help and Prevention Services also work with schools, in respect of individual children about whom there may be concerns. • Social Workers being based within the MASH to provide a consultation service for professionals who have concerns for a child or young person where they are unsure of the level of need. • Providing Safeguarding Updates on a regular basis to the Heads of all schools including the independent sector. Schools have representation on the WSCB and its sub committees. The updates include briefings that are specific to safeguarding issues in schools. • Termly meetings with the Primary Cluster Groups and Secondary Heads to discuss specific safeguarding concerns and updates are provided. • Establishing a Head Teachers Reference Group to consider potential models for Safeguarding Supervision and a framework will be published in July 2016. 	<ul style="list-style-type: none"> • Work is underway to re-issue the professional practice stands that all registered social workers must adhere to. • A permanent position has been developed and sees an Education professional positioned at the integrated front door, realigned access through a portal point at the integrated front door.

Original Scrutiny Recommendation (Dec 15)	Previous Update from Jun 16	June 2017 - Update

Original Scrutiny Recommendation (Dec 15)	Previous Update from Jun 16	June 2017 - Update
<p>14 - Access to safeguarding training</p> <p><i>The DCS is requested to develop a process to ensure that safeguarding training becomes more accessible especially to small organisations in the third sector.</i></p>	<p>Specific training for small organisations in the third sector is delivered in a number of ways:</p> <ul style="list-style-type: none"> • Specific Safeguarding training has been provided to voluntary organisations in 2015 which was well attended by 95 representatives. This training will be offered again in 2016; participants are being requested to register with VCAW in order that they receive Safeguarding briefings and updates as they are produced. • The WSCB has delivered a safeguarding briefing to the network of voluntary community and faith sector organisations. It has promoted the programme of multi-agency training with them, and now supports 'out of hours' training sessions. The WSCB Website provides access to training courses for all agencies. • Access to training has been improved by the introduction of a package of 50 e-learning safeguarding courses from April 2016. These courses are accessible to the network of voluntary community and faith sector organisations. This will be further supported by the use of Social Media such as Facebook and Twitter in order to make information more accessible to interested parties. In the past 12 months over 1,200 safeguarding 'Tweets' have been issued. • The WSCB has representation from and strong links to the voluntary, community and faith sector through the Linked-Up network. 	<ul style="list-style-type: none"> • All training is now advertised on WCSB website and access is free to all partner agencies

Original Scrutiny Recommendation (Dec 15)	Previous Update from Jun 16	June 2017 - Update
<p>15 – Child sexual exploitation training for front-line staff</p> <p><i>The DCS is requested to continue to encourage the uptake of additional training opportunities for front-line staff, including the police, regarding child sexual exploitation.</i></p>	<p>Additional Child Sexual Exploitation training opportunities for front line staff have been put in place in a number of different ways, as follows:</p> <ul style="list-style-type: none"> • 20 multi-agency and single agency awareness raising briefings were delivered during the year including social workers, taxi drivers, health staff (including dental practitioners), housing providers, Chairs of Governors of schools, and elected members. • 700+ multi-agency professionals including elected members watched Chelsea’s Choice along with 2,200 children and young people. • 40 professional across the partnership attended two multi-agency sessions called CSE: Next Steps Training • 40 front line professionals attended two multi-agency sessions on working with and supporting parents and cares affected by CSE. These sessions were delivered by PACE (Parent’s Against Child Sexual Exploitation). • 10 multi-agency CSE training sessions are being provided from April 16 to March 17. This provision will be supplemented by an e-learning CSE package due to be available in April 2016 to all partners across the children’s workforce and adult safeguarding. • “On One Condition” is an excellent new drama production developed with a local youth theatre which really captures the issues facing some young people. It gets to 	<ul style="list-style-type: none"> • Commissioned Child sexual exploitation training for front-line staff from Catch 22 2016/17 - 63 Social Care Staff attended.

Original Scrutiny Recommendation (Dec 15)	Previous Update from Jun 16	June 2017 - Update
	<p>the heart and complexity of the problem and crosses all boundaries.</p> <ul style="list-style-type: none"> • Training undertaken to date has been evaluated and feedback received has informed the future delivery of training. 	

Original Scrutiny Recommendation (Dec 15)	Previous Update from Jun 16	June 2017 - Update
<p>16 – Social Care re-organisation: Follow-up investigation by members</p> <p><i>The Strategic Director of Transformation and Resources is requested to enable scrutiny members to arrange a follow-up session / workshop to evaluate the effectiveness of the re-organisation once the new Specialist Services social care teams are embedded. The review, which will include front-line staff and possibly parents and families, will also monitor the success of the plans to achieve improved retention of staff.</i></p>	<ul style="list-style-type: none"> • Children’s Social Care was redesigned in order to better meet the needs of children, young people and families; this was implemented in June 2015. The teams have a specific focus on either Children in Need and Child Protection or Children in Care and Care Leavers. This has also been broadly welcomed as a way to reduce changes in social worker for children and their families. The move to smaller teams, with opportunities for increased management support and oversight has been welcomed by staff. A review of the redesign is underway to ensure it is meeting its intended aims. • Wirral implemented an improved pay and grading structure for Social Workers, in January 2015, including clear progression routes based upon the Professional Capabilities Framework. • In common with most North West authorities recruiting and retaining experienced Social Workers is a challenge, although recruitment of newly qualified Social workers is effective. • A review of Social Worker pay, progression and retention is currently underway led by Human Resources. 	<ul style="list-style-type: none"> • The social work establishment and structures are a significant focus of the improvement work and will be developed and monitored through governance in place • There is now the proposal for scrutiny members to undertake Reality Check visits through which members will meet with frontline staff. In the first instance these sessions will focus on children’s social care giving members the opportunity to question what had been intended through recommendation 16.
<p>17 - Social Worker Caseloads</p> <p><i>The DCS is requested to develop a mechanism to monitor the caseloads of social workers with the aim of reducing the caseload to, at</i></p>	<p>Measures are in place to monitor caseloads of social workers:</p> <ul style="list-style-type: none"> □ A caseload weighting system was implemented in September 2015 for Children’s Social Care. Protected caseloads are in place for Newly Qualified Social Workers (NQSW) who are completing their Assessed and 	<ul style="list-style-type: none"> • Social Worker Caseloads are a significant focus of the transformation programme • Social Worker Caseloads are a significant focus of the improvement work and will be developed and monitored through governance in place • Regular reporting and monitoring is in place to support this work through management structures and oversight

Original Scrutiny Recommendation (Dec 15)	Previous Update from Jun 16	June 2017 - Update
<p><i>most, the national average.</i></p>	<p>Supported Year in Employment (ASYE) and this is included within the caseload weighting system.</p> <ul style="list-style-type: none"> • Caseloads both amongst teams and for individuals are monitored regularly and are included in discussions as part of the Director of Children’s Services Safeguarding meeting with Social Care Group Managers. • Supervision is monitored both in terms of completion and quality via supervision audits. Supervision is valued by staff and managers and is undertaken regularly. <p>There are a number of measures in place to reduce the overall caseloads in line with the national average:</p> <ul style="list-style-type: none"> • Children’s Social Care currently uses temporary agency Social Workers to provide cover for sickness absence, maternity and vacant Social Work posts. In this way Children’s Social Care seeks to maintain reasonable caseloads amongst staff. • Monthly recruitment rounds for social workers are scheduled for the coming year. • A Social Work Induction Programme is being developed to ensure that all new staff have a consistent introduction to working in Wirral. 	<ul style="list-style-type: none"> • A dedicated HR function, supporting recruitment retention and training is co-located within the department • Impact is now being realised in CIN/CP teams who have reduced caseload with only a small number of social workers with caseloads above 18. • Work is in hand to support this across the service
<p>18: Social Worker Support</p> <p><i>The DCS is requested to consider the options for</i></p>	<ul style="list-style-type: none"> • The Windows 7 equipment replacement project commenced in the autumn of 2014 and for Children’s Service was completed in the summer of 2015. • The Windows 7 project provided all Social 	<ul style="list-style-type: none"> • Consideration is currently being given to further mobile/agile working

Original Scrutiny Recommendation (Dec 15)	Previous Update from Jun 16	June 2017 - Update
<p><i>increasing the availability of laptops for staff, such as social workers, who are regularly working off-site.</i></p>	<p>Workers with new upgraded laptops.</p>	
<p>19: Governance Arrangements</p> <p><i>The DCS is requested to undertake a review of the governance arrangements relating to safeguarding to ensure that remits of bodies, such as Children's Trust Board, Corporate Parenting Group, Health & Wellbeing Board, Local Safeguarding Children Board (LSCB), Safeguarding Reference Group and scrutiny, are clearly understood, the appropriate reporting lines are in place and that duplication of activity is avoided.</i></p>	<ul style="list-style-type: none"> • A review of arrangements commenced in April 2016 and will be completed by September. The review has been asked to consider governance arrangements relating to safeguarding to ensure that the remit of the Children's Trust, Corporate Parenting Group, Health & Wellbeing Board, Wirral Children's Safeguarding Board, Safeguarding Reference Group and scrutiny is understood and that appropriate reporting lines are in place which avoid duplication. • Internal Audit has been requested to perform a review of the inter-connectivity between these groups, the clarity of the different roles and the overall effectiveness of the working arrangements regarding safeguarding children. This work will be reported in June to the Strategic Director. 	<ul style="list-style-type: none"> • In April 2016, the Children's Joint Commissioning Group (CJCG) terms of reference were updated to sharpen the purpose of the group so that it acted as the key strategic group that ensured there was effective implementation of the commissioning activity to deliver the ambition set out in the Children, Young People and Families Strategy (CYPF Strategy). • In September 2016, the Children's Trust terms of reference and purpose were refreshed. The work is progressing to become consistently outcome focussed
<p>20 - The role for Scrutiny within Safeguarding</p> <p><i>The Strategic Director of Transformation and Resources is requested to further examine the role of scrutiny in the safeguarding process by establishing a protocol of understanding with the Local</i></p>	<ul style="list-style-type: none"> • As part of the review being undertaken in relation to recommendation 19, the role of scrutiny will be examined by establishing a protocol of understanding with the Wirral Children's Safeguarding Board. • A protocol was established in October 2014 between the Wirral Children's Safeguarding Board, Health & Well Being Board and the Children's Trust, which will be reviewed as part of this work. 	<ul style="list-style-type: none"> • The LSCB is progressing its development through 8 recommendations and as part of the governance for the improvement journey • The member's work programme is sighted on the work of the LSCBs • A scrutiny workshop to be arranged to discuss how scrutiny and the LSCB can work together more effectively in the future. The intention is to hold the session in time to report back to the Children OSC meeting in September.

Original Scrutiny Recommendation (Dec 15)	Previous Update from Jun 16	June 2017 - Update
<i>Safeguarding Children Board (LSCB)</i>		

4.0 FINANCIAL IMPLICATIONS

4.1 There are no financial implications arising directly from this report.

5.0 LEGAL IMPLICATIONS

5.1 There are no legal implications arising directly from this report.

6.0 RESOURCE IMPLICATIONS: ICT, STAFFING AND ASSETS

6.1 There are no resource implications arising directly from this report.

7.0 RELEVANT RISKS

7.1 There are no relevant risks arising directly from this report.

8.0 ENGAGEMENT/CONSULTATION

8.1 Full engagement with the accountable Senior Leaders within the CYPD to ensure the most up to date position statement could be provided to elected members.

9.0 EQUALITY IMPLICATIONS

9.1 An equality impact assessment has not been completed due to the nature of this report.

REPORT AUTHOR: *Carly Brown*
Head of Quality, Performance and Improvement
telephone: (0151) 666 4308
email: carlybrown@wirral.gov.uk

APPENDICES

REFERENCE MATERIAL

SUBJECT HISTORY (last 3 years)

Council Meeting	Date

This page is intentionally left blank



Children and Families Overview and Scrutiny Committee Tuesday, 20 June 2017

REPORT TITLE:	2016/17 Quarter 4 and Year End Wirral Plan Performance - People Theme
REPORT OF:	Executive Director for Strategy

REPORT SUMMARY

This report provides the 2016/17 Quarter 4 (January - March 2017) performance report for Wirral Plan pledges under the People theme and the closedown of 2016-17 at Year End. The Quarter 4 report is included as Appendix 1, and provides a description of the progress in Quarter 4 including providing available data in relation to a range of outcome indicators and supporting measures.

The Year End closedown report is included as Appendix 2 and provides a summary analysis of improvement of performance against measures and delivery of Pledge strategy actions at year end.

Quarter Four Wirral Plan Performance Summary

The key performance highlights for Quarter 4 include:

- The significant increase in the take up of the 2 year old offer reported last quarter (from 70.0% at the start of the Wirral Plan to 88.1%) has been maintained. The latest national benchmark is 68% (2016).
- There has been improved performance reported for the 6-8 week old development check; 12 month and 2-2½ year Health Visitor Reviews. Continued focus on improvement of the uptake is underway such as initiatives in individual localities offering alternative times and venues for reviews, integrated reviews underway with child-minders and follow up work with GPs.
- Latest data shows that hospital admissions for due to self harm have increased in Wirral. In January 2017 the Child and Adolescent Mental Health Service (CAMHS) has established an Advice and Duty line staffed by experienced CAMHS practitioners and open to calls from parents, children, young people and other professionals to provide support and guidance. The aim is for young people to receive preventative effective support as early as possible and to reduce both presentation at A&E and hospital admissions.
- The Young Chamber delivered the Wirral Careers and Skills Show in March 2017. The event was attended by over 600 young people from across Wirral primary, secondary and post 16 education institutions. Young people attending were met by more than 40 local employers and training providers offering excellent careers advice and 'have a go' activities. Feedback from the young people and teaching professionals was excellent.

- Although set targets have been achieved in quarter 4 for three measures associated with Domestic Violence there has been no improvement in the measures since the start of the Wirral Plan. Significant work is underway through a range of initiatives such as Tomorrows Women Wirral community based support programme and help and intervention programmes to support children and young people.
- A third Wirral Door Knock was held in Rock Ferry, demonstrating the effectiveness of people coming together to pool resources in a targeted way to tackle social isolation. This brings the total to 3 door knock events delivered in 2016/17. Overall, we have knocked on over 2000 doors in Eastham, Woodchurch and Rock Ferry, spoken to over 750 residents, referred 316 people for further advice or support, prevented at least 6 people from being alone on Christmas Day and set up a bereavement peer support group.
- Over 3,000 housing adaptations were completed by year end against a target of 2,000. These interventions are essential in helping older people to maintain their independence and continue to live in their own homes.
- The new advice and information service, 'Ask Us Wirral', was launched at the end of Quarter 4. The service is delivered by Citizens Advice Wirral, Age UK Wirral, Wirral Change and Wirral Mencap and brings together expertise in financial advice and support for older people. The service will ensure that older people can access the advice they need at different times of life through a single point of access leading to improved financial resilience and general wellbeing.
- The Community Pilots continue to provide initiatives that are having a real impact in their local area. In Bidston/St James (Gautby Road) an Anti-Social Behaviour (ASB) youth session project has been successfully delivered and as a result ASB rates have significantly dropped in the area. The Beechwood Centre has been refurbished and is being kitted out as a food hub and community cafe with soft play area and will provide a range of activities to improve life chances in the area.
- Following the commencement of 'Connect Us' in February 2017, 15 community connectors have been employed across 14 wards in the borough. They have started building links with the Community Pilot areas as part of their role is to build a bank of volunteers.
- All the key indicators and measures being monitored in the All Age Disability Strategy are showing progress including the employment rate for people with a disability. There are positive examples of people accessing work thanks to schemes such as the supported internship programme.

Year End Closedown Summary

The closedown report provides the committee with an overview of progress in 2016-17 to assist with scrutiny of the effectiveness of Wirral Plan delivery. It provides analysis in relation to progress measured through the suite of 36 performance indicators related to the People Pledges compared to the start of the Wirral Plan, with focus on the areas that did not improve in 2016-17. It also provides a summary of progress against delivery for each of the activities identified in the Pledge strategy action plans. For the People pledges a programme of 112 actions were identified to deliver the Pledge outcomes and a summary of progress for each of these is shown with agreed actions put in place by the steering groups moving forward into 2017-18.

RECOMMENDATION/S

That the Children and Families Overview and Scrutiny Committee note the content of the report and highlight any areas requiring further clarification or action.

SUPPORTING INFORMATION

1.0 REASON/S FOR RECOMMENDATION/S

- 1.1 To ensure Members of the Children and Families Overview and Scrutiny Committee have the opportunity to scrutinise the performance of the Council and partners in relation to delivering the Wirral Plan.

2.0 OTHER OPTIONS CONSIDERED

- 2.1 This report has been developed in line with the approved performance management framework for the Wirral Plan. As such, no other options were considered.

3.0 BACKGROUND INFORMATION

- 3.1 The Wirral Plan is an outcome-focussed, partnership plan which has 16 supporting strategies that set out how each of the 20 pledges will be delivered. For each pledge, a partnership group has been established to drive forward delivery of the action plans set out in each of the supporting strategies.
- 3.2 A Wirral Plan Performance Management Framework has been developed to ensure robust monitoring arrangements are in place. The Wirral Partnership has a robust approach to performance management to ensure all activity is regularly monitored and reviewed.
- 3.3 Data for the identified indicators is released at different times throughout the year as a result not all Pledges will have results each quarterly reporting period. Some indicators can be reported quarterly and some only on an annual basis with annual figures reported in the quarter they become available.
- 3.4 For the Quarter 4 report each of the indicators a RAGB (red, amber, green, blue) rating is provided against the target and tolerance levels set at the start of the reporting period, with blue indicating performance targets being exceeded. There is also a trend key which shows whether performance has improved, remained static or deteriorated since the start of the Wirral Plan.
- 3.5 There is no report included for the vulnerable children reach their full potential pledge. Following an Ofsted Inspection work in connection with improving outcomes in this area is being reviewed and refreshed. An Improvement Plan in response to the inspection is now being delivered and arrangements are being put in place to ensure robust scrutiny through the Children and Families Committee. Further information on this is provided in the work programme item also included on the agenda for this meeting.
- 3.6 All Wirral Plan performance reports are published on the performance page of the Council's website. This includes the high level Wirral Plan overview report

and the detailed pledge reports which include updates on progress on all activities set out in supporting strategy action plans.

<https://www.wirral.gov.uk/about-council/council-performance>

3.7 Each of the Wirral Plan Pledges has a Pledge Sponsor. The Pledge Sponsors under the People theme are as follows:

- Ageing Well in Wirral – Fiona Johnstone
- Children are Ready for School – Director of Children’s Services
- Children are Ready for Work and Adulthood – Director of Children’s Services
- Vulnerable Children Reach their Full Potential – Director of Children’s Services
- Reducing Child and Family Poverty (Improving Life Chances) – Fiona Johnstone
- People with Disabilities live Independent Lives – Graham Hodgkinson
- Zero Tolerance to Domestic Violence – Mark Smith

4.0 FINANCIAL IMPLICATIONS

4.1 There are no financial implications arising from this report.

5.0 LEGAL IMPLICATIONS

5.1 There are no legal implications arising from this report.

6.0 RESOURCE IMPLICATIONS: ICT, STAFFING AND ASSETS

6.1 There are none arising from this report.

7.0 RELEVANT RISKS

7.1 The performance management framework is aligned to the Council’s risk management strategy and both are regularly reviewed as part of corporate management processes.

8.0 ENGAGEMENT/CONSULTATION

8.1 The priorities in the Wirral Plan pledges were informed by a range of consultations carried out in 2015 and 2016 including the Wirral resident survey.

9.0 EQUALITY IMPLICATIONS

9.1 The Wirral Plan equality impact assessment can be found at:
<https://www.wirral.gov.uk/communities-and-neighbourhoods/equality-impact-assessments/equality-impact-assessments-2014-15/chief>

REPORT AUTHOR: **Nancy Clarkson**
Head of Intelligence
telephone: (0151) 691 8258
email: nancyclarkson@wirral.gov.uk

APPENDICES

Appendix 1: Wirral Plan People Theme 2016-17 Quarter 4 Pledge Reports

Appendix 2: Wirral Plan People Theme 2016-17 Year End Closedown Report

REFERENCE MATERIAL

N/A

SUBJECT HISTORY (last 3 years)

Council Meeting	Date
People Overview and Scrutiny Committee	8 September 2016
People Overview and Scrutiny Committee	28 November 2016
People Overview and Scrutiny Committee	23 March 2017

Appendix 1

Wirral Plan People Theme 2016-17 Quarter 4 Pledge Reports



Older people live well

Overview from the Pledge Sponsor

The Ageing Well in Wirral Strategy has continued to be delivered successfully in Quarter 4. This is due to the strong partnership and collaboration that has been established to drive forward the strategy towards delivering this Wirral Plan pledge.

During Quarter 4 a third Wirral Door Knock was held in Rock Ferry. The event was attended by Lord Filkin, Chair of the Government's Ageing Well Programme which demonstrates that this work is gaining recognition nationally. The approach demonstrates the effectiveness of partners coming together to pool resources in a targeted way to tackle social isolation. This brings the total to 3 door knock events delivered in 2016/17. Overall, we have knocked on over 2000 doors in Eastham, Woodchurch and Rock Ferry, spoken to over 750 residents, referred 316 people for further advice or support, prevented at least 6 people from being alone on Christmas Day and set up a bereavement peer support group. Building on this work, the Older People's Parliament, Wirral Council and Age UK Wirral are looking to deliver the first 'Great Wirral Conversation' event in April. This will involve students from Weatherhead High School talking to older residents around the theme of loneliness. The aim of these events is to promote dialogue between the younger and older generations.

A number of outcomes have been delivered under the priority: Older People Enjoy a Happy Home Life. Over 3,000 housing adaptations were completed by year end against a target of 2,000. There has been an increase in referrals for preventative adaptations in homes to reduce hospital admissions / readmissions and to assist hospital discharges. The budget for adaptations has now increased with support from the Better Care Fund which has created a need to appoint more staff to carry out adaptations. These interventions are essential in helping older people to maintain their independence and continue to live in their own homes. An extra care housing group has now been established to drive forward an increase in the availability of supported housing in response to increasing demand.

The new advice and information service, Ask Us Wirral, was launched at the end of Quarter 4. The service is delivered by Citizens Advice Wirral, Age UK Wirral, Wirral Change and Wirral Mencap and brings together expertise in financial advice and support for older people. The Ask Us Wirral service is an integrated team which also links in with two specialist Citizens Advice projects: The Money Advice Service (which provides advice on debt) and Pensionwise. The service will ensure that older people can access the advice they need at different times of life through a single point of access leading to improved financial resilience and general wellbeing.

Wirral Dementia Action Alliance has gained significant momentum during 2016/17 with an increasing membership and organisations from all sectors becoming more involved. The Council is actively encouraging staff to become dementia friends as part of a national initiative. Age UK Wirral and the Alzheimer's Society are currently developing an awareness campaign aimed at the general public to challenge some of the assumptions that people have about life living with dementia.

Wirral Plan Indicator	Indicator Type	Wirral Plan Start	End of Year Target	2016-17 Q1	2016-17 Q2	2016-17 Q3	2016-17 Q4	2016-17	Trend	Direction of Improvement	Comment
Proportion of residents aged 50+ volunteering on a regular basis	Annual	26% Nov 2015	26%						n/a	Higher is better	This data comes from the Wirral Residents' Survey which will be delivered again in 2017-18.
Proportion of residents aged 50+ who say that they are satisfied with the choice of housing in their local area	Annual	56% Nov 2015	56%						n/a	Higher is better	This data comes from the Wirral Residents' Survey which will be delivered again in 2017-18.
Healthy Life Expectancy at birth: Males	Annual	59.8 2011-13	59.8					60.4 Green	↑	Higher is better	This data comes from the public health outcome framework. Whilst data is released annually in May/June, there is a significant time lag. The data released in June 2016 relates to 2012 - 14 and shows a slight improvement on the baseline (Wirral Plan start).
Healthy Life Expectancy at birth: Females	Annual	61.8 2011-13	61.8					60.9 Amber	↓	Higher is better	This data comes from the public health outcome framework. Whilst data is released annually in May/June, there is a significant time lag. The data released in June 2016 relates to 2012 - 14 and shows a slight decrease from the baseline (Wirral Plan start). Work will need to take place to explore the reasons behind this decrease.

Supporting Measure	Indicator Type	Wirral Plan Start	End of Year Target	2016-17 Q1	2016-17 Q2	2016-17 Q3	2016-17 Q4	2016-17	Trend	Direction of Improvement	Comment
Percentage of older people (aged 50+) who feel safe when outside in the local area during the day	Annual	88% Nov 2015	88%						n/a	Higher is better	This data comes from the Wirral Residents' Survey which will be delivered again in 2017-18.
Percentage of older people (aged 50+) who feel safe when out in the local area after dark	Annual	55% Nov 2015	55%						n/a	Higher is better	This data comes from the Wirral Residents' Survey which will be delivered again in 2017-18.
Percentage of older people (aged 50+) who reported feeling healthy	Annual	65% Nov 2015	65%						n/a	Higher is better	This data comes from the Wirral Residents' Survey which will be delivered again in 2017-18.
Employment rate of people aged 50+	Quarterly	33.5% Jun 2015	33.6%	33.5% Green	33.2% Green	33.6% Green	33.9% Green	33.9% Green	↔	Higher is better	There is a time lag with this data which comes from the Office for National Statistics. The Quarter 3 figure relates to the period Jan - Dec 2016.

Children are ready for school

Overview from the Pledge Sponsor

The Early Childhood Reference Group has continued to work well together to share initiatives and good practice to deliver the outcomes of this pledge. Progress remains steady in all key priority areas and associated actions against plans.

The significant increase in the take up of the 2 year old offer reported last quarter (from 70.0% at the start of the Wirral Plan to 88.1%) has been maintained. Our local position now exceeds national expectation. We will continue to tackle persistent issue and barriers to the take up of the 2 year old offer through a whole partnership approach with a particular focus on children who are looked after.

There has been improved performance reported in this quarter for the 6-8 week old development check; 12 month and 2-2 1/2 year Health Visitor Reviews. Individual localities have been tasked to improve the uptake further by offering alternative times and venues for reviews. All settings/nurseries have a named link from the 0-19 service and processes have been put in place to enable increased uptake.

To support the priority that Children in Wirral will start life well, smoking cessation training has been delivered across midwifery locality teams, seeing increased referrals into smoking cessation service. Local services supported an event led by Public Health England around the Change for Life campaign and using the sugar calculating app, fifty individuals/families made contact with services during the event.

The 'Cherish' training programme that has been written for Early Years Practitioners focusing on the attachment needs of young children in Early Years settings. Training will commence in July 2017. A mapping exercise of parenting services has been completed and findings presented to key stakeholders. Next steps will be to establish a Wirral wide parenting pathway covering all areas of needs and joint work with Local Authority and health commissioners.

To achieve our priority to increase the percentage of children achieving a good level of development at the end of the early years foundation stage, 6 settings are piloting the data tracking tool which will be launched to all providers from June 2017. Whilst 100% of early years providers in schools are rated good to outstanding, this figure reduces to 79.5% when reviewing all early years provider inspections. Feedback trends included engagement with parents and other professionals. The Foundation Years Trust is supporting specific settings, providing targeted support to raise standards.

Data tells us that there is an increasing number of babies and children under two, who are subject to a child protection plan because they have suffered from unexplained, unintentional or deliberate injuries. In 2017-18 we will respond to this critical issue through a newly developed priority area 'To improve multi-agency arrangements to safeguard and protect our youngest children'.

We will do this by:

- Undertaking a review of cases where children under one year old have suffered significant harm – in order to devise a set of vulnerability indicators.
- Use the vulnerability indicators to identify parents to be, babies and young children who may require additional help through coordinated packages of care and support.
- Increase the number of times contact is made with babies and young children by professionals in the first two years of life.
- Raise awareness by professionals and the public about the vulnerabilities babies and young children may be exposed to and explore our joint responsibility to safeguard and protect them from harm.

Wirral Plan Indicator	Indicator Type	Wirral Plan Start	End of Year Target	2016-17 Q1	2016-17 Q2	2016-17 Q3	2016-17 Q4	2016-17	Trend	Direction of Improvement	Comment
Foundation Stage - % achieving a good level of development	Annual	2013-14 Acad Year	85.0%					69.6% Red	↑	Higher is better	This is the final figure for 2015-16 academic year following data validation and replaces the provisional figure reported in quarter 2. The end of year target was ambitious. The results across the North West for the highest attaining Local Authorities, Wirral being one of them, have remained relatively static from the previous academic year. Wirral's performance is 2.9% higher than the North West average and 0.3% higher than performance nationally. It has also improved by 5.8% since the start of the Wirral Plan.

Supporting Measure	Indicator Type	Wirral Plan Start	End of Year Target	2016-17 Q1	2016-17 Q2	2016-17 Q3	2016-17 Q4	2016-17	Trend	Direction of Improvement	Comment
The percentage of women booked to access professional maternity services on or before 12+6 weeks gestation	Quarterly	80.8% Q3 2014-15	80.0%	86.3% Green	86.0% Green	80.4% Green	80.5% Green		↔	Higher is better	Performance remained static at Quarter 4 at 80.5%. The rate is reported as a quarterly average but monitored monthly via the maternity dashboard.
Take up of 2 year old offer by eligible families as identified by the Department of Work and Pensions (DWP)	Quarterly	70.0% Q1 2015-16	78.0%	72.2% Green	74.1% Green	88.1% Blue	88.1% Blue	88.1% Blue	↑	Higher is better	Performance at the start of the 2016-17 year was low at 72.2% and the impact of challenges set can be seen in continual improvement in performance across each quarter. The Early Childhood Service and partners have given high priority to this area and there has been a focus on analysing data for each constituency area to identify barriers to take up and look at ways to address these issues (eg working with health professionals to co-ordinate communication and visits). The take up of the 2 year old offer continues to be a priority. We have started to implement actions identified following the review, through a whole partnership approach and have given particular focus this term to children who are looked after.
The achievement gap between pupils eligible for free school meals and their peers achieving a Good Level of Development in the Early Years Foundation Stage Profile	Annual	19.0% 2014-15 Acad Year	15.0%					18.0% Red	↑	Lower is better	This is the final figure for 2015-16 academic year following data validation. The free school meal gap has showed an improvement of 1% from the previous academic year. Schools with either the lowest Good Level Development attainment and/or the widest gap are being supported and challenged by the School Improvement Team. 22 schools have been identified as requiring support to ensure children are reaching their potential.
Percentage of children aged 4-5 classified as overweight or obese	Annual	22.40% 2014-15	23.08%					22.90% Green	↓	Lower is better	This figure represents the latest annual data for 2015-16 that was released in December 2016.
Percentage of infants who received a 6-8 week Development Check by the time they were 8 weeks	Quarterly	84.6% Q1 2015-16	90.0%	83.0% Amber	84.3% Amber	86.6% Green			↑	Higher is better	Data is for Quarter 3 2016-17 Performance has increased from 84.3% to 86.6% this quarter. Each GP practice now has a Health Visitor (HV) link and they meet every 2 months and provide a list of safeguarding and active cases monthly. The HV is not directly involved in 6-8 week development review, however actively encourage the client to have the assessment. At follow up visits the HV will check whether the review has been completed with the GP. For universal partnership families we would phone the GP if this has not happened.
Percentage of children who received a 12 month Health Visitor review by the time they turned 12 months	Quarterly	66.4% Q1 2015-16	85.0%	70.0% Red	76.2% Red	77.7% Amber			↑	Higher is better	Data is for Quarter 3 2016-17. Performance has increased each Quarter and this is due to the universal and targeted approach used in the teams. This has been particularly successful in Birkenhead who have achieved 86.30% overall this quarter, whereas in Quarter 1 performance was 60%. Individual areas have now been tasked with increasing the uptake using methods specific to their areas, such as alternative times and venues of reviews.
Percentage of children who received a 2-2½ year Health Visitor review	Quarterly	73.0% Q1 2015-16	85.0%	77.0% Amber	74.4% Red	77.0% Amber			↑	Higher is better	Data is for Quarter 3 2016-17. Performance has risen from 74.4% to 77.0% in this quarter. All settings/nurseries have a named link from the 0-19 service and as these links are being established the processes have been put in place to enable increased uptake of the reviews. Integrated reviews have commenced with child minders and each area has a named link health professional for all child-minders.

Young people are ready for work and adulthood

Overview from the Pledge Sponsor

In 2016-17 the Young People are Ready for Work and Adulthood Steering Group has continued to work well together to achieve the aim set out in the children's strategy. 90% of Wirral schools are now rated by Ofsted as being good or better and 62.2% of children achieved 5 or more good GCSE's (including English and Maths). Performance in these areas compares favourably to the national picture of 89% and 53.5% respectively.

As partners, we have continued to make progress in all priority areas. The Child and Adolescent Mental Health Service (CAMHS) has visited most mainstream schools and a telephone consultation line is now available to all schools. The Future in Mind Steering Group will be considering comments and recommendations from young people raised at a number of events held during 2016-17 including:

- 2016 annual Youth Parliament held in November enabling young people to present issues important to them on the theme of mental health and debate these with local elected members.
- 2016 Youth Conference attended by 82 young people representing 10 schools and 2 youth groups
- Youth Parliament which was attended by 48 young people from 6 schools and 3 youth groups.

The Young Chamber delivered the Wirral Careers and Skills Show in March 2017. The event was attended by over 600 young people from across Wirral primary, secondary and post 16 education institutions. Young people attending were met by more than 40 local employers and training providers offering excellent careers advice and 'have a go' activities. Feedback from the young people and teaching professionals was excellent.

The new Electronic Personal Education Plan training has been delivered to designated teachers to allow closer monitoring of our most vulnerable children and review the impact of related interventions. We have delivered an Employability Skills Programme for Care Leavers that has supported 6 young people into Employment, Education and Training opportunities.

We will be focusing on key initiatives during 2017-18 including:

- Continue to work with the CAMHS service, review the effectiveness of the 'Future in Mind' transformation programme and evaluate the impact of the approach.
- Continue to work with schools that fall below the Department for Education floor standards.
- The School Improvement Locality Board will ensure that all pupils are able to access the revised curriculum specification with a view to diminishing the difference in attainment between pupils in receipt of free school meals and their peers.
- A key area of focus in the next years will be to increase the take up of the National Citizen Service programme for 15 to 17 years old in Wirral.
- The Virtual Head Teacher and Senior Manager for Children Looked After (CLA) will review the process and the quality of Personal Education Plans for CLA.

Wirral Plan Indicator	Indicator Type	Wirral Plan Start	End of Year Target	2016-17 Q1	2016-17 Q2	2016-17 Q3	2016-17 Q4	2016-17	Trend	Direction of Improvement	Comment
The % of children achieving 5 good GCSE's (or equivalent) at Key Stage 4 (including English and Maths)	Annual	60.0% 2013-14 Acad Year	68.0%					62.2% Amber	↑	Higher is better	Data has now been validated. There is an improvement in performance of 2% from the start of the Wirral Plan. Two secondary schools significantly underperformed - attaining 19% and 28%. There are three secondary schools below the floor target of 45%.
The % of young people aged 16-18 who are not in Employment, Education or Training. (NEET) - Annual Measure	Annual	4.30% 2014-15	4.20%						n/a	Lower is better	In September 2016 the Department for Education introduced changes to the method used to calculate NEET figures. The changes incorporated the actual proportion of young people who have a destination of 'Not Known' rather than an adjustment being made to the NEET rate to account for this cohort. The actual not known cohort will from April 2017 be added to the actual not in education, employment and training to give the new overall performance measure. Due to these changes monthly data could not be comparable with previous performance and the annual NEET figure has not been made available. In 2017-18 the new NEET measure which will include 'Not Known' data will be reported.
Percentage of schools rated 'good' or 'outstanding' by Ofsted	Annual	84.0% Aug 2015	93.4%					90.0% Green	↑	Higher is better	The latest data available from Ofsted DataView is as at 31 December 2016. This shows a 6% improvement since the start of the Wirral Plan and compares favourably to national performance of 89%. Further analysis shows 100% of special schools, 90% of primary schools and 84% of secondary schools are rated good or outstanding.

Supporting Measure	Indicator Type	Wirral Plan Start	End of Year Target	2016-17 Q1	2016-17 Q2	2016-17 Q3	2016-17 Q4	2016-17	Trend	Direction of Improvement	Comment
Progress 8 Score for Wirral	Annual	n/a	0.00					-0.04 Red	n/a	Higher is better	Progress 8 is a new Department for Education headline measure that aims to capture the progress a pupil makes from the end of primary school to the end of secondary school. Performance was slightly below the national average of -0.03 but compares favourably to North West neighbours which had an average score of -0.15. Wirral is ranked 6 out of 23 North West Local Authorities.
The achievement gap between pupils eligible for free school meals and their peers achieving the 'expected standard' in English, reading, English writing and mathematics at the end of key stage 2.	Annual	n/a	0.0%					27.0% Red	n/a	Lower is better	Performance was reported in Quarter 2 and has now been validated and finalised with no change to previously reported figures. The Locality Board, focusing on school support has this as a top priority.
The achievement gap between pupils eligible for free school meals and their peers achieving at Key Stage 4 (5 or more good GCSE's including English and maths)	Annual	35.7% 2013-14 Acad Year	23.0%					35.9% Red	↔	Lower is better	Provisional figures were reported in Quarter 2. Data has now been validated and finalised and show a small (0.2%) increase in the achievement gap. Two secondary schools attainment in all measures was significantly lower than expected. This has had a detrimental effect on the overall attainment gap. One of these schools is converting to a sponsored academy. The other school is already a sponsored academy receiving significant support and challenge from the Multi Academy Trust.
The percentage of children in good or better schools as rated by Ofsted	Annual	81.0% Aug 2015	90.0%					90.0% Green	↑	Higher is better	The latest data available from Ofsted DataView is as at 31 December 2016. This shows a 9% improvement since the start of the Wirral Plan and compares favourably to national performance of 87%. Further analysis shows 100% of special schools, 91% of primary schools and 88% of secondary schools are rated good or outstanding.
Reduction in use of medication for Attention Deficit Hyperactivity Disorder (ADHD) - Number of items prescribed, rate per 10,000	Quarterly	1.55 Q4 2014-15	1.54	1.75 Green	1.71 Green	1.80 Amber			↓	Lower is better	Data for quarter 4 will be available in quarter 1 (2017-18)
Hospital admissions due to self harm - PH Local Authority Child Health Profiles	Annual	526.0 2014-15	525.0					691.9 Red	↓	Lower is better	Latest data relates to 2015-16 hospital admissions. Following a year on year increase in children and young people who need support during a crisis, in January 2017 Wirral Children's and Mental Health Service (CAMHS) established an Advice and Duty Line which is staffed by experienced CAMHS Practitioners and is available Mon-Fri 9am-5pm. The advice and duty line is open to take calls from other professionals, parents and children and young people who have an issue that they require support and guidance with. One of the impacts of this has been a reduction in referrals but in addition has had a significant impact on the number of children and young people presenting to A&E. Whilst this is very early data to support this, the reduction in Risk Presentations is almost 50%.

Reduce child and family poverty

Overview from the Pledge Sponsor

The Improving Life Chances Steering (ILC) group has continued to work well to tackle child poverty collectively in Wirral and build on the positive impact of initiatives established in the community pilot areas.

An Improving Life Chances event was held in October 2016 to provide a networking opportunity for local organisations, to share good practice and report progress on the key priority areas within the pledge. Following the event a directory of local services has been produced and distributed in the community pilot areas and to key frontline staff to raise awareness of support that is available.

An e-learning training package for child poverty awareness has been developed and accessed by local organisations. We will target key organisations who provide support within local communities to increase the uptake of the training during 2017-18.

The Community Pilots continue to provide initiatives that are having a real impact in their local area. In Bidston/St James (Gautby Road) an Anti Social Behaviour (ASB) youth session project employing Intermediate Labour Market placements as youth workers and using Fareshare food to provide food three nights a week has been successfully delivered. Work has been undertaken by the Wirral Anti-Social Behaviour team and police and as a result ASB rates have significantly dropped in the area. The Birkenhead Constituency Committee funded £28K of holiday food provision across Birkenhead with many projects focusing on Beechwood and Birkenhead North. The discounted supermarkets are being continued to be delivered through each of the food hubs and also deliver food to the community. 'His Church' delivered a 40,000 tonnes lorry to Birkenhead full of cereal for groups and schools to provide breakfast clubs. The Beechwood Centre has been refurbished and is being kitted out as a food hub and community cafe with soft play area and will provide a range of activities to improve life chances in the area. The sports development team are looking to offer food and fitness across the three ILC areas in Beechwood, St James and Seacombe.

Following the commencement of 'Connect Us' in February 2017, 15 community connectors have been employed across 14 wards in the borough. They have started building links with the Community Pilot areas as part of their role is to build a bank of volunteers. They have attended recent community pilot group meetings, looking to support and encourage volunteering within the community.

There has been a slight improvement in the employment rate in Wirral in this quarter. Data relates to performance to December 2016 and does not take into account new activity such as the Ways to Work Programme which has engaged with 1,426 clients and will positively affect employment rates. In April, the Department for Work and Pensions (DWP) held a 'Get Smart' event at the NEO Community Café in Rock Ferry. 26 parents were given advice a range of financial advice and encouraged to take up training or employment opportunities.

A Partnership Framework has been agreed between Wirral Job Centre Plus and Early Childhood Services to promote effective working and help deliver shared aims and objectives, such as information sharing, identifying gaps in childcare provision and employment growth sectors in Wirral to ensure those families who most need the services gain access to them. In 2017-18 we will review the recent DWP paper 'Improving Lives: Helping Workless Families' to look at the implications for Wirral. We will also work with the new service 'Ask Us Wirral' to ensure that it is easier and quicker for families to get the debt and financial inclusion information and advice that they need.

In 2017-18 we will look to further strengthen work in the Community Pilots, including the implementation of volunteering groups. The Community Pilots are being monitored to enable us to understand what their impact is in these areas. We will work with the health service providers in the area such as ABL Health to reduce smoking and work with the Health Visiting Service to maximise the impact of the Healthy Child Programme.

Page 49

Wirral Plan Indicator	Indicator Type	Wirral Plan Start	End of Year Target	2016-17 Q1	2016-17 Q2	2016-17 Q3	2016-17 Q4	2016-17	Trend	Direction of Improvement	Comment
The Proportion of children in low income families	Annual	21.5% Aug 2013	21.4%					23.3% Amber	↓	Lower is better	The latest update to this measure is a snapshot as at 31st August 2014
Increase the employment rate in Wirral	Quarterly	66.7 2014- 15	70.9	69.7 Green	69.7 Green	69.0 Red	69.7 Red	69.7 Red	↑	Higher is better	Performance has improved by 0.7% this quarter, however the value of 69.7 is just slightly outside of the tolerances set for this indicator and therefore the indicator is rated as red. These figures relate to performance to December 16. This indicator can fluctuate due to the nature of the dataset and the latest published data does not take into account any new activity which has come into force since then, such as the Ways to Work Programme which will positively affect the performance of this indicator in the long term to match the aims of the Wirral Growth Plan.
The achievement gap between pupils eligible for free school meals and their peers achieving at Key Stage 4 (5 or more good GCSE's including English and maths)	Annual	35.7% 2013-14 Acad Year	23.0%					35.9% Red	↔	Lower is better	Provisional figures were reported in Quarter 2. Data has now been validated and finalised and show a small (0.2%) increase in the achievement gap. Two secondary schools attainment in all measures was significantly lower than expected. This has had a detrimental effect on the overall attainment gap. One of these schools is converting to a sponsored academy. The other school is already a sponsored academy receiving significant support and challenge from the Multi Academy Trust.

Supporting Measure	Indicator Type	Wirral Plan Start	End of Year Target	2016-17 Q1	2016-17 Q2	2016-17 Q3	2016-17 Q4	2016-17	Trend	Direction of Improvement	Comment
Foundation Stage - % achieving a good level of development	Annual	62.8% 2013-14 Acad Year	85.0%					69.6% Red	↑	Higher is better	This is the final figure for 2015-16 academic year following data validation and replaces the provisional figure reported in quarter 2. The end of year target was ambitious. The results across the North West for the highest attaining Local Authorities, Wirral being one of them, have remained relatively static from the previous academic year. Wirral's performance is 2.9% higher than the North West average and 0.3% higher than performance nationally. It has also improved by 5.8% since the start of the Wirral Plan.
Take up of 2 year old offer by eligible families as identified by the Department of Work and Pensions (DWP)	Quarterly	70.0% Q1 2015-16	78.0%	72.2% Green	74.1% Green	88.1% Blue	88.1% Blue	88.1% Blue	↑	Higher is better	Performance at the start of the 2016-17 year was low at 72.2% and the impact of challenges set can be seen in continual improvement in performance across each quarter. The Early Childhood Service and partners have given high priority to this area and there has been a focus on analysing data for each constituency area to identify barriers to take up and look at ways to address these issues (eg working with health professionals to co-ordinate communication and visits). The take up of the 2 year old offer continues to be a priority. We have started to implement actions identified following the review, through a whole partnership approach and have given particular focus this term to children who are looked after.
Family Intervention service positive outcomes with families (Phase 2 of programme)	Quarterly	n/a	300		6 Red	117 Red	139 Red	139 Red	n/a	Higher is better	Performance at quarter 4 represents the total claims made between 01 April 2016 to 31 March 2017. In quarter 2 issues were identified which affected programme performance and corrective actions put in place. Following these actions we have seen an increase in outcomes achieved but not as rapidly or widely effective as required to meet the end of year target. The issue relating to school attendance has not been resolved at a national level but continues to be affecting performance of programmes across England. Wirral is one of 56 Local Authorities having not met their end of year target, including 4 Merseyside Authorities. Corrective action for 2017-18 includes: we have liaised with a neighbouring Local Authority which is achieving outcomes in line with the performance schedule to replicate aspects of their approach; engagement of families will be on a more targeted approach so that the service is working with specific areas of need which can be measured robustly; and undertaking more interventions with families meeting 2-3 criteria rather than focussing solely on those meeting 4-6.
Family Intervention service engagement with families (Phase 2 of programme)	Quarterly	n/a	848	212 Green	517 Blue	599 Amber	1,447 Blue	Blue	n/a	Higher is better	Performance at Quarter 4 represents the total claims made between 01 April 2016 to 31 March 2017. As previously reported we have revised the entry criteria to include those meeting 2 or 3 of the national criteria. This has produced a significant increase in the number of families identified and supported through the programme and local authority services. In 2017-18 this continued approach will enable attachment targets to be achieved and should enable more outcome claims to be made.

People with disabilities live independent lives

Overview from the Pledge Sponsor

There has continued to be good progress during Quarter 4. Work to deliver an All Age Disability Service is gathering momentum as the specification for the service is being worked up. A new Advocacy Hub was launched in February to deliver the statutory services the Council is responsible for, including advocacy related to Independent Mental Capacity and Health, the Care Act and the promotion of self and peer advocacy. These services will ensure that people with disabilities are effectively represented and supported in relation to decisions made about them and their care provision.

Overall, the All Age Disability Strategy is leading to improved partnership working to ensure the priorities in the strategy are being delivered. All the key indicators and measures being monitored are showing progress. There have been positive examples of people accessing work thanks to schemes such as the supported internship programme. There has been a significant increase in the employment rate for people with a disability or long term condition, and targets were met in relation to the quality of life for people with long term conditions and the proportion of people who feel supported to manage their condition.

A new Lead Commissioner for All Age Independence has been appointed to drive forward the All Age Disability strategy and partnership. A new Independence Bulletin has been launched as a means to share the latest information on policy, research and innovative projects for people with disabilities. There has been good progress in developing the marketplace of service providers through the launch of the Live Well Wirral website which went live in October 2016. Work to develop the offer for respite provision has begun and this will continue in the year ahead.

A number of events have been successfully delivered targeting employers to find out more about the support available to successfully employ or retain staff with disabilities or long term conditions. Further work will be delivered in 2017/18 by the Department of Work and Pensions through an enhanced support offer for smaller employers. Whilst dedicated funding for travel training for adults has come to an end, the provision of travel training will be incorporated into a wider review for the Adult and Children Specialist Transport Services during 2017/18.

During the year, Disabled Go audits were completed at numerous locations across Wirral including Council buildings, Leisure Centres, the Chamber of Commerce and key Transport facilities. 150 Detailed Access Guides and 550 Key Access Reviews have been undertaken and these will be available via the Disabled Go website following a launch in May 2017. These guides and reviews will be available to people living and visiting Wirral and support will be provided to organisations to address any recommendations for improvements identified, to ensure the accessibility of their facilities.

Work towards increasing the availability of supported housing has progressed in-year. A number of housing schemes are progressing and at different stages of design and build.

Wirral Plan Indicator	Indicator Type	Wirral Plan Start	End of Year Target	2016-17 Q1	2016-17 Q2	2016-17 Q3	2016-17 Q4	2016-17	Trend	Direction of Improvement	Comment
Health related quality of life for people with long term conditions	Annual	0.698 2014-15	0.698					0.695 Green	↔	Higher is better	Despite this reducing slightly, performance is in line with target tolerances set. It is hoped that this will begin to improve as the actions within the strategy are delivered.
Employment rate aged 16-64 - Equality Act core or Work Limiting Disabled	Quarterly	37.5% Jun 2015	43.6%	46.6% Green	48.3% Blue	45.4% Green	44.0% Green	44.0% Green	↑	Higher is better	There is a time lag with this data which comes from the Office for National Statistics. The Quarter 4 figure relates to data from the period Jan - Dec 2016
Supporting Measure	Indicator Type	Wirral Plan Start	End of Year Target	2016-17 Q1	2016-17 Q2	2016-17 Q3	2016-17 Q4	2016-17	Trend	Direction of Improvement	Comment
Proportion of people with long term conditions who feel supported to manage their condition	Annual	66.7% 2014-15	66.7%					68.0% Green	↑	Higher is better	
Children with a statement of special educational need (SEN) or education health and care plan (EHCP) achieving 5 or more good GCSEs (or equivalent) at Key Stage 4 (including English and maths).	Annual	6.3% 2014-15 Acad Year	8.3%					9.3% Blue	↑	Higher is better	Provisional data - final data is due to be released in early 2017

Zero tolerance to domestic violence

Overview from the Pledge Sponsor

Information under development.

Wirral Plan Indicator	Indicator Type	Wirral Plan Start	End of Year Target	2016-17 Q1	2016-17 Q2	2016-17 Q3	2016-17 Q4	2016-17	Trend	Direction of Improvement	Comment
Number of domestic abuse Wirral MARAC cases per 10,000 adult females	Quarterly	54 2014-15	52	13 Green	27 Green	36 Green	52 Green	52 Green	↓	Higher is better	
Children and young people experience domestic abuse (Wirral MARAC cases)	Quarterly	1,289 2014-15	1,524	302 Green	579 Red	807 Red	1,211 Green	1,211 Green	↓	Higher is better	
Percentage of incidents of repeat domestic abuse (Wirral MARAC cases)	Quarterly	16% Apr 2014-Mar 15	25%	30% Amber	21% Green	25% Green	28% Green	28% Green	↓	Lower is better	

Key

Trend

↑ Performance Improving ↓ Performance Deteriorating ↔ Performance Sustained N/A – No comparable data available

Based on Wirral Plan start date with exception of: Take up of 2 year old offer by eligible families as identified by the Department of Work and Pensions (DWP) - compared to same period in previous year.

Target Rating (Blue, Green, Amber, Red) based on agreed tolerance range for individual measures

Blue - Above Target Green - Within Target Amber - Below Target Red - Significantly Below Target.

Appendix 2

Wirral Plan People Theme 2016-17 Year End Closedown Report

Wirral Plan 2020



1. Introduction

This report sets out the 2016-17 year end position and close down for the People Theme Pledges of the Wirral Plan in 2016-17.

During 2016-17 reports outlining progress against delivery of Pledges were produced on a quarterly basis to ensure all stakeholders continuously monitor the progress being made. On a quarterly basis Pledge steering groups review progress and put in place key actions to ensure delivery is kept in track.

This report sets out a close down of activity in 2016-17 in two key areas:

- It provides analysis in relation to progress measured through the suite of 36 performance indicators related to the People Pledges compared to the start of the Wirral Plan. Full detail of each of the measures is shown in the Wirral Plan People Theme Quarter 4 report and underpinning individual Pledge reports and this year end close down report sits alongside that detail.
- It also provides a summary of progress against delivery for each of the activities identified in the Pledge strategy action plans. For the People Pledges a programme of 112 activities were identified to deliver the Pledge outcomes and a summary of progress for each of these is shown with agreed actions put in place by the steering groups moving forward into 2017-18.

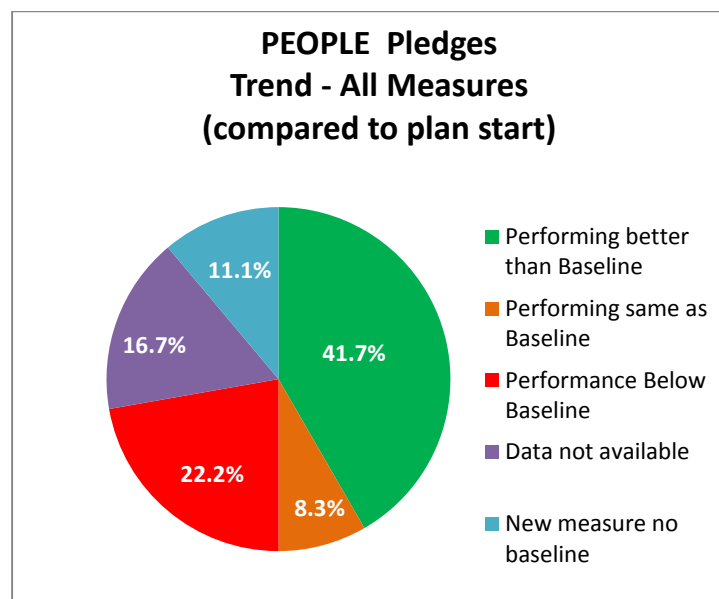
At the end of the reporting cycle for each year of the Wirral Plan each of the strategy action plans that support the delivery of the 20 Pledges are refreshed to ensure they remain focused on delivery of outcomes for Wirral residents. The outcome measures set out in the Wirral Plan performance framework we use to measure the impact of the change made are also refreshed. These changes are in place for 2017-18 monitoring of Wirral Plan delivery.

In 2016-17 the Pledge Vulnerable children reach their full potential was not reported on through the Wirral Plan Framework due to the work put in place and overseen by the Improvement Board as a result of the 2016 Ofsted Inspection. In 2017-18 this Pledge will be reported on through Wirral Plan reporting arrangements.

2. Performance Analysis

Delivery of the plan is monitored by the Wirral Plan Outcome Framework. A key part of the framework is a set of measures which are identified by all stakeholders as the key way to monitor delivery progress. The framework consists of both outcome indicators which are performance indicators linked to population change; these are often long term measures which can take considerable time to impact on. There are also a set of supporting measures which provide additional context to delivery and the improvements being made.

Detailed information regarding the performance against measures is shown in the Pledge reports. The Wirral Plan set out a five year vision to make improvement in the 20 Pledges. The chart below summarises performance of the outcome framework measures since the start of the Wirral Plan.



PEOPLE Direction of Travel - All Measures		
Performing better than Baseline	15	41.7%
Performing same as Baseline	3	8.3%
Performance Below Baseline	8	22.2%
Data not available	6	16.7%
New measure no baseline	4	11.1%
Total	36	100.0%

In 2016-17 there has been good progress in a range of key areas across the People Pledges with performance improved or sustained in 18 or 50% of all measures.

For 6 measures data is not yet available and for 4 measures which were new for the Wirral Plan there was no Wirral Plan start baseline; for those measures in subsequent years improvement will be based on the first year they are measured.

In the People Pledges there are 8 measures where performance has decreased since the start of the Wirral Plan. These include:

- Healthy Life expectancy at birth: Females, which has decreased by 0.9 from 61.8 to 60.9 years. There is a significant time lag with this data with the data released in June 2016 related to 2012-14.
- Percentage of children aged 4-5 classified as overweight or obese has increased from 22.40% to 22.90%. This data represents the latest annual data for 2015-16 released in December 2016.
- The rate of items prescribed per 10,000 for medication for Attention Deficit Hyperactivity Disorder (ADHD) which has increased from 1.55 at the start of the Wirral Plan to 1.80 at the end of Quarter 3 2016-17.
- Hospital admissions due to self harm which has increased from 526 in 2014-15 to 691.9 in 2015-16 (there is a time lag with this data).
- The proportion of children in low income families has increased from 21.5% in August 2013 to 23.3% in August 2014 (there is a time lag with this data).

Page 56 A range of these measures are complex health related measures, or measures where the national trend has also not improved such as children in low income families and childhood obesity. In areas where there is a specific Wirral underperformance including self harm and ADHD medication, significant targeted activity is in place to actively impact on these areas, including new initiatives such as the child mental health Advice and Duty line to provide targeted support for self harm concerns.

In the area of Domestic Violence the Pledge steering group identified that under reporting was an issue in Wirral. As a result two key indicators focused on increasing the numbers reported for the first year of the plan, 2016-17, to help change the culture of reporting and to support people to report domestic violence in Wirral. Despite this the measures did not improve:

- The number of domestic abuse Wirral MARAC cases per 10,000 adult females has decreased from 54 in 2014-15 to 52 in 2016-17.
- Children and young people experiencing domestic abuse has decreased from 1,289 in 2014-15 to 1,211 in 2016-17.

A further domestic violence measure has not improved - the percentage of incidents of repeat domestic abuse increased from 16% to 28%. Significant action is underway through partnership work led by the domestic violence Pledge group to impact on this complex area in future years.

Turning the curve on some of these indicators is challenging and can take significant time to achieve. The 5 year scope of the Wirral Plan will ensure continued focus on these complex areas over a longer time span allowing the required time to ensure a lasting impact can be made.

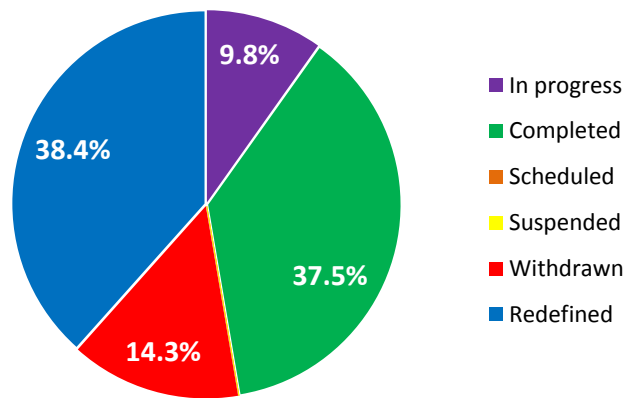
3 Pledge Activity Summary

All actions identified in 2016-17 Pledge strategy action plans were reviewed at the end of 2016-17. The assessment carried out indicates the status of the actions at the year end with the purpose to allow oversight of the effectiveness of Pledge Steering Groups to plan and deliver key actions in order to deliver the Pledges and improved outcomes for Wirral residents.

The assessment was based on the use of six classifications. As the Wirral Plan is a five year plan and a number of longer term complex activities have been identified, the expectation is that not all activities would be delivered in 2016-17 and some will be carried over into future years. In addition due to changes in year some of the activities identified at the start of the year required review, and there was also an opportunity through the refresh to link associated actions across the strategies into one stronger action in 2017-18 and remove duplication. Full detail of each of the activities by Pledge is shown below with the rationale for change provided for individual planned actions.

Page 57

People Pledges - Year End Action Status



Category	Explanation
Scheduled	An action that is scheduled to commence later in the plan
Completed	An action that has been signed off as completed by the Pledge Sponsor
In progress	An action that has commenced and is scheduled beyond 2016/17
Suspended	An action that has started but has been paused for a specified reason
Re-defined	An action that has been refined and updated to better reflect the action
Withdrawn	An action that has been removed from the strategy for a specified reason

Pledge : Older people live well

Priority 01: Being an active part in strong, thriving local communities

2016-17 Action	Timescale	Year End Status	Rationale for Amendment
Complete targeted research and engagement to identify residents who are socially isolated in Wirral	Apr 2016 - Aug 2016	Completed	
Implement Liquid Logic Marketplace to capture local activities	Jan 2016 - Apr 2016	Completed	
Identify opportunities to encourage intergenerational activities across Wirral through working with local communities, organisations and schools	Apr 2016 - Mar 2017	Redefined	The wording of this action has been updated and refreshed from a previous action on intergenerational activity.
Encourage businesses to be age friendly community spaces	Apr 2016 - Mar 2017	Redefined	The wording of this action has been made more specific to ensure clarity of delivery.
Explore opportunities through the Transport Plan for Growth for improving access to transport and maximise the benefits of the scheme	Apr 2016 - Mar 2017	Withdrawn	Will be delivered through the Transport Strategy in 2017-18.
Encourage older residents to access volunteering opportunities	Apr 2016 - Dec 2016	Redefined	Volunteering will be given more focus in 2017-18 and has been reworded to make it more specific.
Development of a social isolation measure	Apr 2016 - Dec 2016	Completed	

Priority 02: Enjoy a happy home life

2016-17 Action	Timescale	Year End Status	Rationale for Amendment
Complete a strategic review of sheltered housing services for older people and agree scheme proposals	Jan 2016 - Mar 2017	Completed	
Work with registered providers and private companies to deliver 300 extra care homes by 2020	Apr 2016 - Mar 2020	Redefined	The wording of this action has been amended to ensure clarity of delivery.
Work with care home providers to ensure that older people who reside in care homes all receive care packages with dignity and respect	Apr 2016 - Mar 2017	Redefined	Agree a set of actions with the Combined Authority Safeguarding Board to ensure that all older people who reside in care homes or receive packages of care at home are treated with dignity and respect.
Increase the availability of accessible homes by accessing 2000 disabled facilities grants (DFGs) per annum	Apr 2016 - Mar 2020	Withdrawn	Now reporting as a measure.
Identify ways of creating neighbourhoods where people feel safe and are safe	Apr 2016 - Mar 2017	Completed	

Priority 03: Being emotionally and physically healthy

2016-17 Action	Timescale	Year End Status	Rationale for Amendment
Integrating health and social care services through the creation of a single organisation (Healthy Wirral Programme) - creating a single delivery hub for social care and community services and creating a single commissioning approach for health and social services in Wirral	Jan 2016 - Apr 2017	Withdrawn	This is an overarching transformational programme, withdrawn from this strategy.
Promote schemes and initiatives to encourage older residents to be physically and mentally healthy	Apr 2016 - Aug 2016	Completed	
Encourage organisations to become more dementia aware - especially across frontline services	Apr 2016 - Mar 2017	Completed	
Implement the Wirral Strategy for Carers through supporting the Carers Partnership Board	Apr 2016 - Mar 2020	Redefined	The wording of this will be redefined to ensure more effective working together with the Carers group.

Priority 04: Being financially secure

2016-17 Action	Timescale	Year End Status	Rationale for Amendment
Work with local businesses to tackle barriers for older people to access employment and volunteering opportunities	Apr 2016 - Mar 2017	Redefined	The wording of this action has been made more specific. "Showcase employment opportunities for those aged 50+ in Wirral". Volunteering now has a separate action in priority 1.
Review provision of pre-retirement courses for all local residents to plan for their retirement years	Apr 2016 - Mar 2017	Redefined	This action has not been resolved and therefore has been amended to 'Explore the feasibility of offering a pre-retirement course for all local residents to plan for their retirement years'
Review available financial advice and support for older residents	Apr 2016 - Mar 2017	Completed	

Priority 05: Having better access to the right information and support

2016-17 Action	Timescale	Year End Status	Rationale for Amendment
Identify ways for older residents to access information and support.	Apr 2016 - Mar 2017	Completed	

Pledge : Children are ready for school

Priority 01: Children in Wirral will start life well			
2016-17 Action	Timescale	Year End Status	Rationale for Amendment
Increase the uptake of maternity services delivered by integrated teams in locality-based settings.	Jun 2016 - Mar 2018	In progress	
Improve young children's health outcomes in line with the Healthy Child Programme	Apr 2015 - Mar 2017	Redefined	The action is integrated into the Healthy Child Priority under Priority 2.
Collate performance data and develop new performance measure around 2 1/2 year old Integrated Child Health Review	Jun 2016 - Mar 2018	Redefined	The action is integrated into the Healthy Child Priority under Priority 2.

Page 62

Priority 02: Children receive sensitive and responsive care from their main caregivers in the first years of life			
2016-17 Action	Timescale	Year End Status	Rationale for Amendment
Provide training and mentoring for childminders, nurseries and childcare settings which focuses on the attachment needs of babies and infants.	Jun 2016 - Jul 2018	Redefined	The action is integrated into the Healthy Child Priority under Priority 2.
Review both evidence-based parenting programmes and peer-led and community based activities to ensure all parents can access support for effective parenting	May 2016 - Jan 2017	Redefined	The action has been re-worded to include commissioning.

Priority 03: Increase the % of children achieving a good level of development at the end of the early years foundation stage

2016-17 Action	Timescale	Year End Status	Rationale for Amendment
Close the gap in readiness for school for disadvantaged children	Sep 2015 - Jul 2017	Redefined	This issue will be covered in the improved data tracking action in priority 4.
Percentage of schools and childcare settings rated good or outstanding increases	Jan 2016 - Dec 2017	Redefined	Action re-worded to include focus on working with Early Years Childcare providers.
Improve the take up of 2, 3 and 4 year old nursery places for vulnerable children by sharing responsibility as a partnership.	Apr 2016 - Dec 2018	Redefined	This issue will be covered in the improved data tracking action in priority 4.

Pledge : Young people are ready for work and adulthood

Priority 01: Young people have access to high quality learning experiences which support them into employment			
2016-17 Action	Timescale	Year End Status	Rationale for Amendment
Work with Headteachers and governors to develop a schools' strategy for Wirral	May 2016 - Sep 2017	Redefined	There is now a separate Schools Strategy and high level actions from the action plan are included.
To ensure that schools below the DfE floor standards and schools causing concern make good or better progress	Sep 2015 - Jul 2017	Redefined	Re worded to include new DfE attainment standard of 'making expected progress'.
To close the inequalities gap in attainment between those young people in receipt of free school meals and their peers	Sep 2015 - Jul 2017	In progress	
To reduce persistent absence and strive to improve attendance for all pupils with a specific focus on the most vulnerable	Sep 2016 - Jul 2017	In progress	
Progress for children with special educational needs and disabilities is the same as for all children and young people - that they will achieve well in their early years, at school and in college, and lead happy and fulfilled lives	Jul 2016 - Apr 2018	In progress	
To make sure that the local special educational needs and disability provision is responsive to local needs and promotes children's achievement	Feb 2016 - Sep 2018	Withdrawn	Activity will form part of a national initiative where each Local Authority has commissioned an evaluation of needs and provision.
To provide challenge to schools/education establishments so that all Children Looked After make at least expected progress across each key stage	Apr 2016 - Sep 2017	In progress	
To deliver the Employability Skills Programme for Care Leavers (14-19 model)	Jun 2016 - Jan 2017	Redefined	Reported against the high level action 'All Children supported to achieve their full potential'.

Priority 02: Children and young people enjoy good health and well-being into adulthood			
2016-17 Action	Timescale	Year End Status	Rationale for Amendment
Work with schools and other stakeholders to roll out the 'Future in Mind Strategy' designed to provide support so that schools and colleges are more equipped to work with young people with lower levels of mental health.	Apr 2016 - Feb 2017	In progress	
To support agencies to promote resilience, early intervention and prevention for young people.	Mar 2016 - Feb 2017	In progress	
To provide targeted drug and alcohol interventions so reducing misuse	Apr 2015 - Sep 2016	Redefined	Included in the reducing risk behaviour action.
To reduce the number of teenage conceptions by work with young people on healthy relationships and good sexual health	Apr 2015 - Sep 2017	Redefined	Included in the reducing risk behaviour action.

Priority 03: Children and young people effectively participate in their communities			
2016-17 Action	Timescale	Year End Status	Rationale for Amendment
To raise aspirations, engage local employers and improve vocational awareness develop opportunities for young people through the Young Chamber and Wirral Met College	Apr 2016 - Sep 2017	In progress	
To promote citizenship and volunteering opportunities, with a specific focus on community involvement	Mar 2015 - Jul 2017	Redefined	Reworded to remove reference to volunteering.
To provide initiatives which look at reducing anti-social behaviour	Mar 2015 - Jul 2017	Redefined	Action will be reported in Neighbourhoods are Safe pledge report.
To complete a review of youth provision in Wirral	Mar 2016 - Apr 2017	Withdrawn	This activity is Business as Usual.

Pledge : Reduce child and family poverty

Priority 01: Overarching actions:

2016-17 Action	Timescale	Year End Status	Rationale for Amendment
To organise and deliver an annual improving life chances/child poverty conference to raise awareness of issues affecting local families, highlight local services and provide a networking opportunity to further develop opportunities and share good practice	Jun 2016 - Mar 2020	Redefined	The action has been re worded to reflect the fact that the first conference has taken place and will now become an annual event.
To provide comprehensive child poverty awareness training programme, both face to face and e-learning.	Apr 2016 - May 2016	Redefined	Action reworded to show the training is now in place and will be monitored to monitor the uptake and efficiency.
Develop intelligence and performance to understand local needs and what works	Jan 2016 - Mar 2020	Withdrawn	Information will be coordinated and refreshed through the JSNA.
Establish project steering group to develop and implement Community Pilots	Apr 2016 - Apr 2016	Completed	
Co-design 2 Community Pilots with local residents and partners	Apr 2016 - Sep 2016	Completed	
Implementation & delivery plan for 2 Community Pilots	Apr 2016 - Jan 2017	Completed	

Priority 02: Supporting parents into sustainable employment			
2016-17 Action	Timescale	Year End Status	Rationale for Amendment
Increase local volunteering opportunities within communities to build skills and experience through linking up with the asset based community development (ABCD) initiative	Apr 2015 - Mar 2020	Redefined	This action has been redefined to concentrate on Community Pilot areas. Timescale has been amended to align with Community Pilot dates.
Embed employability programmes and financial advice within primary health services and early years' intervention activities e.g. through Community Hubs	Apr 2016 - Jun 2017	Redefined	This action has been redefined to be more specific about providing employment and financial information in two children's centres in the Community Pilot Areas.
Co-ordinate and raise awareness of accessible, flexible and affordable childcare to enable parents to return to and/or sustain employment.	Apr 2015 - Mar 2020	Redefined	The activity is now more specifically linked to the Community Pilot Areas.
Provide advice and information on affordable transport schemes to enable parents to access training & employment	Apr 2015 - Mar 2017	Completed	
Ensure that Growth Plan priorities deliver skills; job sustainability and quality in order to provide a long term solution to child and family poverty	Apr 2015 - Mar 2020	Withdrawn	The action is withdrawn as borough level strategic activity will be picked up and monitored in the growth plan.

Priority 03: Improve life chances for children and young people			
2016-17 Action	Timescale	Year End Status	Rationale for Amendment
Develop a co-ordinated and strategic programme for 0-19 year olds, including the antenatal period to deliver the Healthy Child Programme	Apr 2015 - Oct 2016	Redefined	The action has been re-worded to align to Community Pilot areas and timescales aligned to Community Pilot dates.
Close the inequalities gap in attainment between young people in receipt of free school meals and their peers	Apr 2015 - Jul 2017	Withdrawn	This activity will be included in the Children's Young People and Families Strategy.
To raise aspirations, engage local employers and develop opportunities for young people through the Young Chamber	Apr 2015 - Sep 2017	Withdrawn	This activity will be included in the Children's Young People and Families Strategy.
Priority 04: Supporting families to become financially resilient			
2016-17 Action	Timescale	Year End Status	Rationale for Amendment
Embed local delivery of targeted information, advice and support on debt & financial inclusion	Jul 2016 - Mar 2017	Redefined	This action has been re worded and outcome included in the action 'To target frontline staff to raise awareness of debt and financial advice in Community Pilot areas'.
Develop a plan to increase access to (and take up of) affordable savings and loans e.g. Credit Union	Jul 2016 - Mar 2017	In progress	
Development of a Supporting families out of poverty measure	Sep 2016 - Mar 2017	Withdrawn	A chapter is in place in the JSNA that will be refreshed/renewed as data becomes available.

Priority 05: Tackling the immediate effects of poverty			
2016-17 Action	Timescale	Year End Status	Rationale for Amendment
Develop a neighbourhood approach to tackle food poverty	Apr 2015 - Apr 2018	Redefined	The action was re-worded to include reference to fuel poverty.
Through targeted work, increase take-up of entitlements such as free nursery places, free school meals and energy efficiency schemes	Apr 2015 - Apr 2018	Redefined	The take up of entitlements will be reported through the action 'Monitor Impact of Community Pilots'.
Embed a strategic and co-ordinated approach to housing/advice/information and support to low-income families	Apr 2015 - Sep 2017	Completed	
Implement a local plan with Healthy Wirral to embed their prevention and early intervention work	Apr 2015 - Sep 2017	Redefined	This action has been redefined to focus on reducing smoking rates in the Community Pilot Areas.

Pledge : People with disabilities live independent lives

Priority 01: All People with disabilities are well and live healthy lives			
2016-17 Action	Timescale	Year End Status	Rationale for Amendment
Work as a partnership to develop and agree a robust method of capturing data around the prevalence of disability in Wirral	Apr 2016 - Mar 2017	Redefined	This work is under way but will be re-defined in 2017/18 to: Establish insight into the prevalence and types of disability in Wirral. This will inform better service provision in response to need.
Implement an All Age Integrated Disability Service in Wirral	Apr 2016 - Apr 2017	In progress	
Explore opportunities for better sharing of information between all agencies in the partnership to provide more seamless and holistic support to disabled people and their families	Apr 2016 - Sep 2016	Completed	
Explore the feasibility of appointing a lead commissioner for disabled people	Apr 2016 - Dec 2016	Completed	
Explore innovative ways to maintain provision of short breaks and respite placements for children and adults with disabilities	Apr 2016 - Sep 2016	Completed	
Survey to be developed to capture measure around the quality of support provided to children with disabilities / long term conditions	Apr 2016 - Dec 2016	Redefined	Action re-worded to: Implement a programme of engagement for people with disabilities to ensure their voices are heard.
Deliver 300 additional Extra Care Homes in Wirral by 2020	Jul 2016 - Mar 2020	In Progress	
Explore an approach to reducing the disparity in the cost of commissioned services between children and adults	Apr 2016 - Jun 2017	Withdrawn	This action is to be withdrawn as this will be within scope of the All Age Disability Service Project which is captured as a separate action.

Priority 02: Young People and Adults with disabilities have access to employment and are financially resilient			
2016-17 Action	Timescale	Year End Status	Rationale for Amendment
Work with local employers to consider innovative collaborative approaches to increase the local provision for training and work opportunities for people with disabilities and to enable more people to access employment. To include mapping out and promoting the support that is available to support organisations when employing people with disabilities	Apr 2016 - Mar 2020	Completed	
Ensure that as part of the procurement of future services across the partner organisations in Wirral it is a priority requirement in the service specification to identify opportunities for disabled people to access mainstream employment	Apr 2016 - Apr 2020	Redefined	Ensure that all Partner Organisations are level three Disability Confident employers and all suppliers become at least level One Disability Confident employers.
Ensure that there is a focus on employment and volunteering within the Annual Review for young people with disabilities in schools from year 9 onwards (Education, Health and Care Plan)	Apr 2016 - Mar 2017	Completed	
Assessment and Care Planning process for disabled people to consider participation in employment and / or volunteering as a key outcome, where appropriate	Oct 2016 - Mar 2017	Completed	
Develop volunteering performance data	Oct 2016 - Dec 2016	Withdrawn	This action is withdrawn as there is no mechanism for this to be achieved systematically and the emphasis should be supporting disabled people into volunteering opportunities rather than tracking the data.
Work with partners to ensure all commissioned and non-commissioned services and activities are provided in the advice and support offer	Apr 2016 - Dec 2016	Completed	

Priority 03: All people with disabilities have choice and control over their lives			
2016-17 Action	Timescale	Year End Status	Rationale for Amendment
Work in partnership with disabled people, their families and carers to ensure that they play an active part in influencing the planning, commissioning and delivery of services	Apr 2016 - Mar 2020	Redefined	Action has been reworded to: Develop a framework of participation and engagement for service users and carers in the re-design of services they receive.
Explore opportunities for disabled people in receipt of personal budgets to pool their funds to enable them to take part in a wider range of activities, hobbies and leisure together and increase social interaction	Oct 2016 - Sep 2017	Withdrawn	This is viewed as business as usual activity as it is already in place.
Strengthen self-advocacy to ensure that disabled people have a strong voice in how services are developed and delivered locally	Apr 2016 - Sep 2017	Completed	
Work as a partnership to explore innovative ways to remove barriers to people getting out and about in Wirral - Design of Street Furniture	Aug 2016 - Mar 2020	Redefined	This action has been superseded by the new action: Review options available for how best to support people to access and use existing transport services.
Work as a partnership to explore innovative ways to remove barriers to people getting out and about in Wirral - Accessibility of shops, restaurants and public buildings such as community centres and hospitals	Apr 2016 - Mar 2020	Completed	
Develop a measure to capture perceptions of choice and control for children and adults with disabilities	Jul 2016 - Sep 2017	Redefined	This action has been incorporated into the new action: Implement a programme of engagement for people with disabilities to ensure their voices are heard.
Develop measure around use of personalised budgets	Apr 2016 - Mar 2017	Completed	

Pledge : Zero tolerance to domestic violence

Priority 01: Prevention and Early Intervention			
2016-17 Action	Timescale	Year End Status	Rationale for Amendment
Commission a co-ordinated agency, community and voluntary sector response based on prevention and early intervention. (Link with Early Help & Prevention Strategy, Local Safeguarding Boards, Create a Domestic Abuse Champion Network)	Jun 2016 - Sep 2016	Redefined	Redefined to reflect the next phase of the project.
Design a service delivery model which is responsive to the level of risk (Identify sustainable alternative solutions to gap in service provision re: Zero Centre closure, collaborate with LCR colleagues to identify any shared service potential)	Jun 2016 - Mar 2017	Completed	
Encourage businesses to adopt a domestic abuse pledge and become Domestic Abuse Champions	Jun 2016 - Mar 2017	Completed	
Deliver co-ordinated training, education and public awareness strategy to ensure that everyone is aware of Wirral's Zero tolerance to all forms of Domestic Abuse	Feb 2016 - Apr 2016	Completed	
Develop supporting measure for reporting "Improved understanding of domestic abuse through training sessions"	Apr 2016 - Mar 2017	Completed	
Develop supporting measure for reporting "Number of children and YP experiencing domestic abuse being supported through early intervention"	Apr 2016 - Mar 2017	Completed	

Priority 02: Provision - Children and Young People at the Heart of our Domestic Abuse Response			
2016-17 Action	Timescale	Year End Status	Rationale for Amendment
Prioritise the marketing of a clear referral pathway for all victims, professionals, agencies, friends and families	Jun 2016 - Mar 2017	Completed	
Identify initiatives to strengthen work already being undertaken to deliver interventions which mitigate the risks of children becoming future victims/perpetrators.	Jun 2016 - Mar 2020	Redefined	Redefined to reflect the next phase of the project.
Investigate the deployment of Domestic Abuse advisors to engage domestic abuse victims presenting at accident and emergency	Jun 2016 - Jun 2016	Completed	
Undertake a review of Supported Accommodation for victims of Domestic Abuse to ensure that it is able to respond to individual needs.	Jun 2016 - Mar 2020	Redefined	Redefined to reflect the next phase of the project.
Develop supporting measure for reporting "Increase the number of people reporting DA across the DA Alliance spectrum"	Apr 2016 - Mar 2017	Completed	

Priority 03: Partnership - A Strong Community Co-ordinated Response			
2016-17 Action	Timescale	Year End Status	Rationale for Amendment
Develop the Domestic abuse and Harmful Practices Steering Group to deliver effective leadership and a clear strategic vision to tackle domestic abuse locally	Feb 2016 - Apr 2016	Completed	
Work with all partners to develop proposals for fully integrating resources to tackle domestic abuse through a single team – co-located at the Multi-Agency Safeguarding Hub	Jun 2016 - Sep 2017	Redefined	Redefined to reflect the next phase of the project
Establish a clear joint commissioning approach for delivering comprehensive interventions across the spectrum of domestic abuse services.	Jun 2016 - Mar 2017	Completed	
Identify ways of creating neighbourhoods where people feel safe and are safe	Jun 2016 - Mar 2017	Withdrawn	This will continue to be managed as operational business as usual.
Complete a programme of research to map the domestic abuse provision in Wirral (link to needs assessment, capture hard to reach groups, link to Wirral joint strategic needs analysis)	Jun 2016 - Sep 2016	Completed	
Develop supporting measure for reporting "Evaluating the services we provide to ensure that they are as effective as possible and provide the best possible value for money"	Apr 2016 - Mar 2017	Completed	
Develop supporting measure for reporting "The number of children affected by domestic abuse who have accessed a support programme"	Jun 2016 - Mar 2017	Completed	

Priority 04: Perpetrators - Make Victims Safer and Reduce Re-offending			
2016-17 Action	Timescale	Year End Status	Rationale for Amendment
Work with colleagues across the Liverpool City Region to evaluate the effectiveness of perpetrator programmes currently on offer.	Jun 2016 - Mar 2017	Completed	
Build on the Integrated Offender Management Model to manage a cohort of Domestic Abuse perpetrators and evaluate the effectiveness of this intervention	Jun 2016 - Mar 2020	Redefined	Redefined to reflect the next phase of the project.
Lobby central government to bring about a specific 'Domestic Abuse' clause to the Common Assault crime category.	Jun 2016 - Mar 2020	Withdrawn	This will be taken forward as business as usual by the Corporate Public Affairs Manager.
Work with the MJCB and the Courts to ensure that high risk perpetrators are dealt with swiftly and appropriately	Jun 2016 - Mar 2020	Withdrawn	This will be managed as operational business as usual.
Develop supporting measure for reporting "Number of perpetrators identified and referred into behaviour change programmes (both via agencies and self-referrals)"	Apr 2016 - Mar 2017	Completed	
Develop supporting measure for reporting "Effective completion of behaviour change programmes"	Apr 2016 - Mar 2017	Completed	
Develop supporting measure for reporting "Feedback on the effectiveness of perpetrator intervention and support programmes"	Apr 2016 - Mar 2017	Completed	
Develop supporting measure for reporting "Numbers of successful prosecutions" and / or "Proportion of successful prosecutions"	Apr 2016 - Mar 2017	Completed	

This page is intentionally left blank



Children and Families Overview and Scrutiny Committee Tuesday, 20 June 2017

REPORT TITLE:	Children and Families Overview & Scrutiny Committee - work programme update
REPORT OF:	The Chair of the Committee – Councillor Tom Usher

REPORT SUMMARY

This report explains the process of developing and managing the scrutiny work programme for the municipal year. The Children and Families Overview & Scrutiny Committee, in cooperation with the other three Overview & Scrutiny Committees, is responsible for proposing and delivering an annual scrutiny work programme. This work programme should align with the corporate priorities of the Council, in particular the delivery of the Wirral Plan pledges which are within the remit of the Committee.

It is envisaged that the work programme will be formed from a combination of scrutiny reviews, standing items and requested officer reports. This report provides the committee with an opportunity to plan and regularly review its work across the municipal year. Some initial ideas for a work programme, based on issues which were of interest to members of the former People Overview & Scrutiny Committee, are attached as an appendix to this report.

RECOMMENDATION/S

Members are requested to:

1. Approve the proposed Children & Families Overview & Scrutiny Committee work programme for 2017/18, making any required amendments.
2. Nominate the Chair and membership of the task & finish group for the Statutory Care Plan scrutiny review.
3. Agree, in principle, to the establishment of a programme of Reality Check Visits which will form part of the Committee's annual work programme.
4. Note the proposal to establish a Members' workshop to determine a more effective working relationship with the Local Safeguarding Children Board.
5. Provide delegated authority to the Chair, Vice Chair and Spokespersons to give further detailed consideration to the Committee's work programme prior to the next scheduled Committee meeting in September.

6. Give delegated authority to the Chair, Vice Chair and Spokespersons of both the Children and Families OSC and the Adult Care & Health OSC to:
 - make arrangements to hold an appropriate workshop to scrutinise proposals for the all-age disability and mental health service; and
 - if necessary, to approve and refer any report arising from the workshop directly to Cabinet.

SUPPORTING INFORMATION

1.0 REASON/S FOR RECOMMENDATION/S

To ensure members of the Children and Families Overview & Scrutiny Committee have the opportunity to contribute to the delivery of the annual work programme.

2.0 OTHER OPTIONS CONSIDERED

Not Applicable

3.0 BACKGROUND INFORMATION

3.1 THE SCRUTINY WORK PROGRAMME AND THE WIRRAL PLAN

The work programme should align with the priorities of the Council and its partners. The programme will be informed by:

- The Wirral Plan pledges
- The Council's transformation programme
- The Council's Forward Plan
- Service performance information
- Risk management information
- Public or service user feedback
- Referrals from Cabinet / Council

The specific Wirral Plan pledges and associated strategies of particular relevance to the Children and Families Overview & Scrutiny Committee are:

Pledge	Strategies
Children are ready for school	Wirral's Strategy for children, young people and families https://www.wirral.gov.uk/sites/default/files/all/About%20the%20council/Wirral%20Plan/Children%20Young%20People%20and%20Families%20Strategy.pdf
Young people are ready for work and adulthood	
Vulnerable children reach their full potential	
Reduce child and family poverty	Improving life chances https://www.wirral.gov.uk/sites/default/files/all/About%20the%20council/Wirral%20Plan/Improving%20Life%20Chances%20Strategy.pdf
Zero tolerance to domestic violence	Zero tolerance to domestic abuse https://www.wirral.gov.uk/sites/default/files/all/About%20the%20council/Wirral%20Plan/Domestic%20Abuse%20Strategy.pdf

Although the People with Disabilities Live Independently pledge is within the remit of the Adult Care and Health Overview & Scrutiny Committee, some aspects may also be of interest to the Children and Families Overview & Scrutiny Committee.

3.2 PRINCIPLES FOR PRIORITISATION

Good practice suggests that, in order to maximise the impact of scrutiny, it is necessary to prioritise proposed topics within the work programme. Members may find the following criteria helpful in providing a guideline towards ensuring that the most significant topics are prioritised:

Principles for Prioritisation	
Wirral Plan	Does the topic have a direct link with one of the 2020 pledges?
	Will the review lead to improved outcomes for Wirral residents?
Public Interest	Does the topic have particular importance for Wirral Residents?
Transformation	Will the review support the transformation of the Council?
Financial Significance	Is the subject matter an area of significant spend or potential saving?
	Will the review support the Council in achieving its savings targets?
Timeliness / Effectiveness	Is this the most appropriate time for this topic to be scrutinised?
	Will the review be a good use of Council resources?

By assessing prospective topics using these criteria, the Committee can prioritise an effective work programme that ensures relevance and the highest potential to enhance outcomes for residents.

3.3 DELIVERING THE WORK PROGRAMME

It is anticipated that the work programme will be delivered through a combination of:

- Scrutiny reviews undertaken by task & finish groups
- Evidence days and workshops
- Committee reports provided by officers
- Standing committee agenda items, for example, performance monitoring and financial monitoring
- Spotlight sessions
- Standing panels (where deemed necessary)

As some of the selected topics may well cut across the Wirral Plan themes, it is anticipated that some of the scrutiny topics may be of interest to members of more than one committee. In these circumstances, opportunities for members of more than one committee to work jointly on an item of scrutiny work will be explored.

Regular work programme update reports will provide the committee with an opportunity to plan and regularly review its work across the municipal year.

3.4 TRANSFER OF SCRUTINY WORK PROGRAMME ITEMS

Members will be aware that, at Annual Council held on 16th May 2017, it was agreed that the remit of the former People Overview & Scrutiny Committee should be split between two successor committees, namely; the Children and Families Overview & Scrutiny Committee and the Adult Care and Health Overview & Scrutiny Committee. A number of work programme items of the former People Overview & Scrutiny Committee are likely to be of interest to members of the Children and Families Overview & Scrutiny Committee. In addition to the items proposed for this agenda and the meeting scheduled for 26th September, the following may be of particular interest to members:

Statutory Care Plan Scrutiny Review

Members of the former Children Sub Committee held a workshop in March 2017 to “reflect on current scrutiny arrangements regarding the Children’s Services Ofsted report and the Improvement Plan, providing input to the development of an effective work programme for the Children Sub Committee”. In order to provide some continuity in transition to the new scrutiny arrangements, Members may want to reflect the outcomes of that workshop in the emerging work programme for the Children and Families Overview & Scrutiny Committee.

At the workshop, Members agreed to recommend that a task & finish group should be formed to undertake a review of the effectiveness and timeliness of statutory care plans. Members were informed that this was a topic which was not currently subject to detailed investigation by the Improvement Board and would, therefore, not lead to duplication of effort. Subsequently, a number of members of the former Children Sub Committee formulated a draft scope for the review. Members are requested to nominate the Chair and membership of the task & finish group. The draft scope document, which is subject to amendment once the task & finish group membership is confirmed, is attached as an appendix to this report.

Reality Check Visits

Key to the success of scrutiny is the ability of Members to check evidence from a variety of sources. Since the publication of the Ofsted report in September 2016, Members of the former Children Sub Committee have considered ways in which evidence from different sources could be triangulated. While members routinely receive reports from senior management and have access to performance monitoring reports, it is suggested that greater access to frontline staff and service users would enable scrutiny members to triangulate evidence with other sources and would give members greater confidence in the outcomes of their scrutiny work. It is, therefore, proposed to establish a programme of Reality Check Visits through which scrutiny members could engage directly with frontline staff.

Proposed operating principles for the visits are:

- A programme of visits will be scheduled and will form part of the Committee's work programme. A visit will normally take place approximately every eight weeks. Visits will be set or amended taking into account the programme of externally set scrutiny by Ofsted and the Department of Education. There will be no direct relationship between each visit. Therefore, Members may volunteer to participate in any particular visit.
- Prior to each visit, the scrutiny officer will issue a short briefing note which will inform members of the function of the service area, background information and any issues directly relevant to the Ofsted report.
- Each visit will comprise a maximum of five members supported by a scrutiny officer. A visit will usually take a maximum of 2 hours.
- The visits will give Members the opportunity to talk directly to staff so they can understand the service directly from them. Members could ask questions directly, for example, on caseloads, support offered to staff, auditing of cases and the outcomes for children and families.
- The findings from each visit will be reported to the next meeting of the Children and Families Overview & Scrutiny Committee. The format of the short report could include visit attendees, context of the visit (where; when), the key issues found and any resulting recommendations.
- Outcomes of the visits will include greater Member reassurance but may also lead to members deciding to undertake a more detailed piece of scrutiny work on a particular topic.
- The programme of visits could include:
 - The MASH and Integrated Front Door;
 - Each of the 3 locality offices, spending time with the Children Looked After, Child Protection and Children in Need teams;
 - The children with disability service;
 - The safeguarding unit (Child Protection chairs and Independent Reviewing Officers);
 - Willow Tree (the disability respite centre);
 - Response, the provider of services for adolescents and homeless 16/17 year olds;
 - Early help settings

Working relationship with the Local Safeguarding Children Board

While the Improvement Board is currently in place, it is important that members establish scrutiny arrangements which will be effective in the long-term. A number of members attended a safeguarding training event provided by the Centre for Public Scrutiny in January 2017. A key message for the scrutiny of safeguarding arrangements was the establishment of strong relationships with key partner bodies and organisations. The Local Safeguarding Children Board is clearly a key partner organisation. It is, therefore, planned to arrange a workshop at which Committee members will be able to understand the key links between scrutiny and the Board and to recommend ways in which those links could be improved. The outcomes of the workshop will be reported to the next available meeting of the Children and Families Overview & Scrutiny Committee.

3.5 ALL-AGE DISABILITY AND MENTAL HEALTH TRANSFORMATION PROJECT

Members may be aware that an approach to pre-decision scrutiny of Transformation Programme projects was reported to the former People Overview & Scrutiny Committee on 14th July 2016. There is a proposal to consider alternative delivery models for the All-age Disability and Mental Health services. In line with the general approach for the scrutiny of Transformation programme projects, it is proposed that a workshop be arranged in order to give members the opportunity to review the outline proposals. As these will impact on service delivery for both children and adults, it is suggested that a joint workshop be held with members of both the Children and Families OSC and the Adult Care & Health OSC invited to attend.

Current proposals are for a joint workshop to be held in July. In order to meet the project reporting timescales, it is proposed that the Chairs, Vice Chair and Spokespersons of both the Children and Families OSC and the Adult Care & Health OSC be given delegated authority to agree the plans for the workshop and, if necessary, to approve and refer any report arising from the workshop directly to Cabinet.

3.6 FURTHER DEVELOPMENT OF THE SCRUTINY WORK PROGRAMME

In line with the new remit of the Committee and the principles for prioritisation, as described above, Members are requested to suggest possible topics for inclusion in the work programme. Committee Members should also consider how best to further develop the work programme in advance of the next scheduled Committee meeting in September. This could be achieved by Committee providing delegated authority to the Chair, Vice Chair and Spokespersons to provide further detailed input to the work programme's development.

4.0 FINANCIAL IMPLICATIONS

Not Applicable

5.0 LEGAL IMPLICATIONS

Not Applicable

6.0 RESOURCE IMPLICATIONS: ICT, STAFFING AND ASSETS

The delivery of the scrutiny work programme will be met from within existing resources.

7.0 RELEVANT RISKS

Not Applicable

8.0 ENGAGEMENT/CONSULTATION

Not Applicable

9.0 EQUALITY IMPLICATIONS

This report is for information to Members and there are no direct equality implications.

REPORT AUTHOR:

Alan Veitch

Scrutiny Support

0151 691 8564

email: alanveitch@wirral.gov.uk

APPENDICES:

Appendix 1: Children and Families Overview & Scrutiny Committee – Work programme

Appendix 2: Statutory care plan scrutiny review – draft scope document

REFERENCE MATERIAL

SUBJECT HISTORY (last 3 years)

Council Meeting	Date

PROPOSED AGENDA ITEMS – Tues 20th June 2017

Item	Format	Officer
Briefing Pack – Children & Families OSC	Report	Scrutiny team
Committee remit and key issues for the municipal year	Presentation	Deborah Gornik
Improvement Plan – Update	Presentation	Deborah Gornik
Safeguarding Children Scrutiny Review – Progress report.	Report	Deborah Gornik
Schools Strategy	Presentation	Sue Talbot
Performance monitoring – 2016/17 Q4	Report	Mike Callon to provide report
Financial Monitoring – 2016/17 Q4	Report	Peter Molyneux to provide report
Work programme update	Report	Report of the Chair (Alan Veitch to provide report)
Deadline for reports to be with Committee Services: Monday 5th June 2017		

PROPOSED AGENDA ITEMS – Tues 26th September 2017

Item	Format	Officer
Minutes from Children & Families OSC (20 th June)	Minutes	
Feedback from workshop regarding the relationship between scrutiny and the LSCB	Report	Chair (Alan Veitch to provide report)
Improvement Plan – Update	Presentation	Deborah Gornik
Merseyside Police – Role in safeguarding procedures	Report	To be arranged
Educational attainment in Wirral 2016/17	Report	Sue Talbot
Domestic Abuse – update on the delivery of the strategy	Report	Mark Smith
Performance monitoring – 2017/18 Q1	Report	Mike Callon to provide report
Financial Monitoring – 2017/18 Q1	Report	Peter Molyneux to provide report
Policy Inform	Report	Rachel Howey to provide report
Report from Member’s Reality Check visit	Report	Chair (Alan Veitch to provide report)
Work programme update	Report	Report of the Chair (Alan Veitch to provide report)
Deadline for reports to be with Committee Services: Monday 11th September 2017		

ADDITIONAL AGENDA ITEMS – WAITING TO BE SCHEDULED

Item	Format	Approximate timescale	Lead Departmental Officer
Children, Young People and Families - update on the delivery of the strategy	Report	To be agreed	Deborah Gornik
Safeguarding Children Annual Report (2016/17)	Report	Nov 2017	Kerry Mehta / David Robbins
Overview of case file audits during the preceding 2 / 3 months	Report	To be agreed	
Improving Life Chances strategy – update on the delivery of the strategy (last provided: March 2017)	Report	To be agreed	Fiona Johnstone

WORK PROGRAMME ACTIVITIES OUTSIDE COMMITTEE

Item	Format	Timescale	Lead Departmental Officer	Progress / Comments
Statutory Care Plans	Task & finish group	To be agreed	To be confirmed	
Reality Check visits	Member visits	To be agreed	Simone White	Programme of visits to be determined
Safeguarding governance - Scrutiny's relationship with the LSCB and other safeguarding bodies	Workshop	To be agreed – expected to be in July 2017	David Robbins	
All-age Disabilities and Mental Health transformation project	Workshop	July 2017	Graham Hodkinson	Potential joint workshop with members of Adult Care & Health OSC
Transformation Programme – business cases	Workshop	As and when required		
Budget scrutiny 2018 / 19	Workshop	To be agreed		
Looked after children - Follow-up review	Evidence day	Deferred	Liz Davenport	Waiting until post-Ofsted planning for scrutiny is complete
Children ready for school	Task & finish group	Deferred	Deborah Gornik	

FORMER CHILDREN SUB-COMMITTEE

OUTSTANDING WORK PROGRAMME ITEMS (For information only)

Item	Format	Timescale	Lead Departmental Officer
Exception reports highlighting positive and negative aspects arising from school Ofsted inspection reports	Report	Standing item	Sue Talbot
School Strategy (follow-up to presentation on 8 th March 2017)	Report	To be agreed	Sue Talbot
Governance arrangements and the role of scrutiny in safeguarding	Report	To be agreed	
Devolution of the Further education budget and the apprenticeship framework	Report	To be agreed	
Quality Assurance process of care plans	Report	To be agreed	
Outcomes of the audit of case files in children's social care	Report	To be agreed	
Edge of care service (as suggested at Children Sub Committee – 08/03/17)	Report	To be agreed	Deborah Gornik
A Children Sub Committee member's workshop proposed the following as regular items in terms of monitoring the Improvement Plan: <ul style="list-style-type: none"> Copies of minutes from recent Improvement Board meetings – standing item; Copy of the most recent version of the Improvement Plan – standing item; Performance data tracker Overview of case file audits during the preceding 2 / 3 months – a regular presentation; Future models of care as being developed by the Transformation Team. 	Reports	To be agreed	
Statutory Care Plans (as agreed by members at the Children Sub-Committee workshop – 29/03/17) Scope for the review has been agreed.	Task & Finish Group	To be agreed	
A programme of Reality Check visits will be arranged (as agreed by members at the Children Sub-Committee workshop – 29/03/17)	Member visits followed by report back to Committee	To be agreed	
Follow-up to the original Looked after children scrutiny review (August 2013)	To be agreed	To be agreed	
Follow-up to the previous Safeguarding scrutiny review (December 2015)	To be agreed	To be agreed	

This page is intentionally left blank

Draft Scope Document

Review Title: Statutory Care Plan Scrutiny Review
Responsible Committee: Children & Families Overview & Scrutiny Committee
Date: 31st May 2017

1. Contact Information:	
Panel Members: The Chair and members of the task & finish group will be agreed at the commencement of the new municipal year Councillors present at the scoping session: Alan Brighthouse David Burgess-Joyce Angela Davies Chris Meaden Walter Smith	Key Officers: Departmental officers - to be agreed Officers present at the scoping session: Sheila Murphy (Interim Social Care Improvement Lead) Janet Simon (Children's Social Care) Julia Hassall (Director of Children's Services) Alan Veitch (Scrutiny Officer) Patrick Torpey (Scrutiny Officer)
2. Review Aims:	
Wirral Plan Pledge/s: <ul style="list-style-type: none">• Vulnerable children reach their full potential	
Review Objectives: <ul style="list-style-type: none">• To review the quality and effectiveness of Statutory Care Plans (scope will include children looked after, children with care orders and children with special guardianship orders).• To measure the extent to which Statutory Care Plans:<ul style="list-style-type: none">▪ Are individualized▪ Have stretching targets▪ Are outcome and goal focused▪ Are regularly reviewed and up to date▪ Are shared with young people and reflect their wishes and feelings	
Scrutiny Outcomes: <ul style="list-style-type: none">• Members will receive assurance about the quality and effectiveness of the Statutory Care Plan process.• Identify areas for service improvement and make recommendations to this effect.• Ensure service user feedback is incorporated within the outcomes of the review.	
3. Review Plan	
Review Approach: Workshop, Evidence Day, Task and Finish? The Task & Finish Group will undertake the following activities: <ul style="list-style-type: none">• Meetings with relevant Council Officers (see below)• Meetings with external stakeholders (see below)• The Panel will invite Young Inspectors from the Children and Young People's Reference Group to gather views and opinions of a sample of looked after children.	
Review Duration: <ul style="list-style-type: none">• It is planned to complete the review within three months.	
Scheduled Committee Report Date: <ul style="list-style-type: none">• Children and Families O&S Committee, 26th September 2017	

Scheduled Cabinet Report Date:

- Cabinet, 6th November 2017

4. Sources of Evidence:**Key Witnesses:**

Wirral Council Staff:

- Social Workers (ranging in experience)
- Team Managers
- Head of Quality, Performance and Improvement, CYPD (Carly Brown)
- Independent Reviewing Officers

External Stakeholders:

- Head Teachers representative
- Safeguarding lead with the Clinical Commissioning Group (Helen Healey)

Service Users

- Foster Parents
- Children in Care

Supporting Papers / Documentation:

Documents will include:

- Young Persons Guide to Care Planning
- Staff training documents – including “What Makes A Good Social Worker” document being developed by Wirral Children in Care Council
- Sample of anonymised care plans
- An evidence pack including relevant learning from case file audits, data and statistics on foster care placements / school changes / social worker changes.

Involvement of service users / public:

- The views of service users, in this case a sample of looked after children will be captured through interviews by Young Inspectors from the Children and Young People’s Reference Group.

5. Key Communications:**Cabinet Member:**

- The scope document will be shared with the relevant portfolio holder at the start of the review (Portfolio folder for Children’s Services, Cllr Bernie Mooney).
- The draft report will also be discussed in advance of being finalised by the task & finish group, before being presented to the Children and Families Overview & Scrutiny Committee for approval.

Press Office:

- The scope document will be sent to the press office on approval.
- The final report will be referred to the press office for information.